

# TACAN RWY 18

TACAN DWG Chan <b>2</b>	APCH CRS <b>180°</b>	Rwy Ldg THRE <b>189</b> Arprt Elev <b>195</b>	AL-699 [USAF]	DUKE FLD (EGLIN AF AUX NR3) (KEGI)
----------------------------	-------------------------	---	---------------	------------------------------------

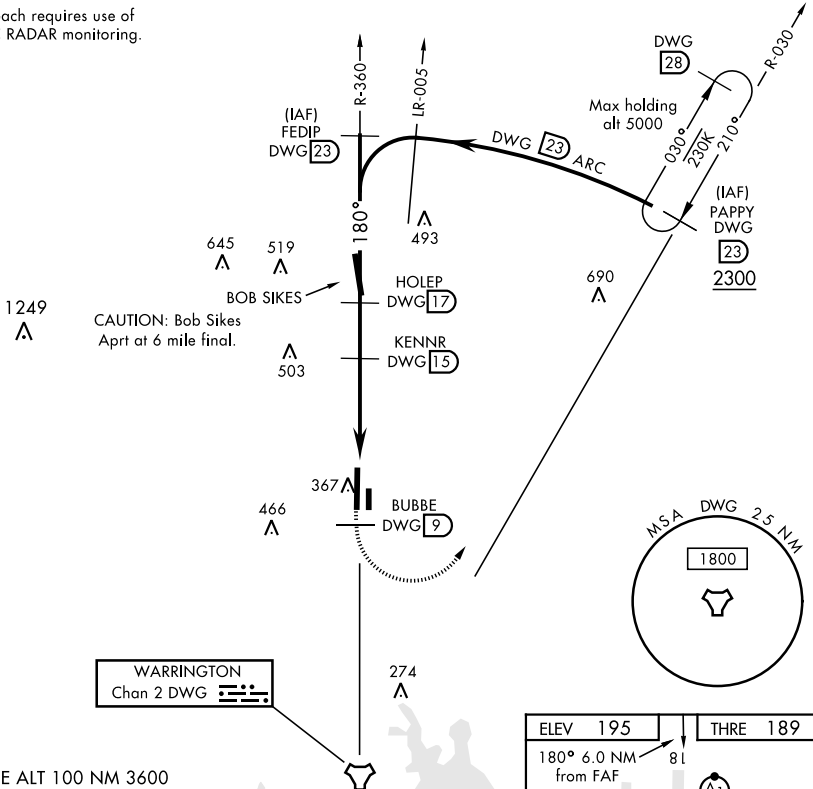
\* When ALS inop, increase CAT AB RVR to 55, vis to 1 mile, CAT CDE vis to 1½ miles.

ALSF-1

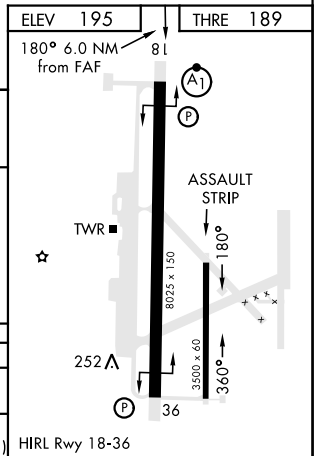
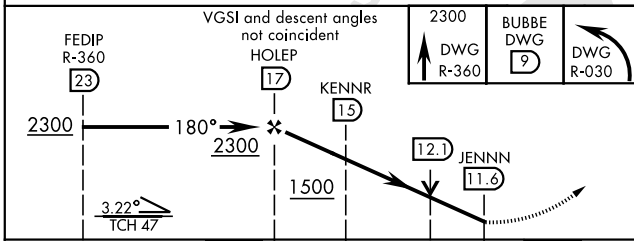
MISSED APPROACH: Climb on DWG R-360 to 9 DME (BUBBE), then climbing left turn to 2300 direct DWG R-030/23 DME (PAPPY) and hold.

ATIS ★ <b>244.575</b>	EGLIN APP CON <b>125.1 281.45</b> (271° - 089°) <b>132.1 360.6</b> (090° - 270°)	DUKE TOWER ★ <b>133.2 290.425</b>	GND CON <b>123.25 251.125</b>
--------------------------	--	--------------------------------------	----------------------------------

Missed Approach requires use of RNAV or ATC RADAR monitoring.



EMERG SAFE ALT 100 NM 3600



CATEGORY	A	B	C	D	E
S-18*	560/24 371 (400-½)		560/35 371 (400-¾)		
CIRCLING	700-1 505 (600-1)		700-1½ 505 (600-1½)	820-2 625 (700-2)	840-2¼ 645 (700-2¼)

# TACAN RWY 18

SE-3, 25 FEB 2021 to 25 MAR 2021

SE-3, 25 FEB 2021 to 25 MAR 2021