

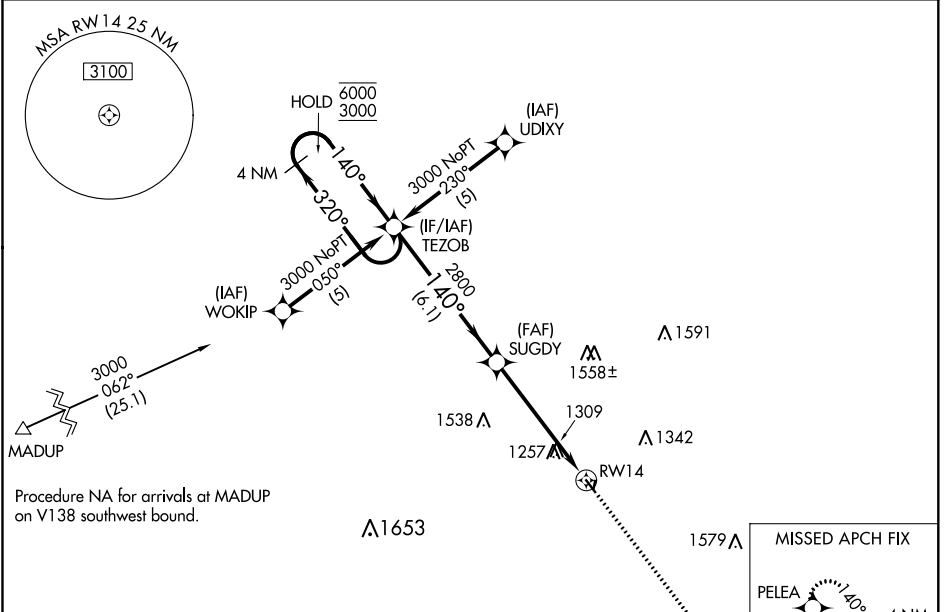
WAAS CH <b>40219</b> <b>W14A</b>	APP CRS <b>140°</b>	Rwy ldg <b>3200</b> TDZE <b>1044</b> Apt Elev <b>1044</b>
--	------------------------	---

# RNAV (GPS) RWY 14

JEFFERSON MUNI (E F W)

RNP APCH.	MISSED APPROACH: Climb to 3000 direct PELEA and hold.
<p>Procedure NA at night. Rwy 14 helicopter visibility reduction below 1 SM NA. Baro-VNAV NA. Use Perry altimeter setting.</p>	

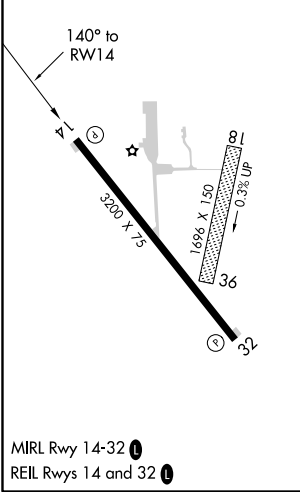
PRO AWOS-3 <b>118.0</b>	MINNEAPOLIS CENTER <b>134.0 288.3</b>	UNICOM <b>122.8 (CTAF) 0</b>
----------------------------	--	---------------------------------



NC-3, 25 FEB 2021 to 25 MAR 2021

NC-3, 25 FEB 2021 to 25 MAR 2021

ELEV 1044	TDZE 1044
-----------	-----------



4 NM Holding Pattern		VGS1 and RNAV glidepath not coincident (VGS1 Angle 3.00/TCH 28).		3000	PELEA
6000 ← 320°		→ 140°		↑	✦
3000		SUGDY 2800		RW14	
GP 3.00°		2800		6.1 NM	
TCH 40				5.3 NM	
CATEGORY	A	B	C	D	
LPV DA	1330-1	286 (300-1)		NA	
LNAV/VNAV DA	1907-3	863 (900-3)		NA	
LNAV MDA	1780-1	736 (800-1)		NA	
CIRCLING	1780-1	1820-1¼		NA	
	736 (800-1)	776 (800-1¼)			