

VORTAC RSG 114.55 Chan 92(Y)	APP CRS 111°	Rwy Idg TDZE 2372 Apt Elev 2372
--	------------------------	---

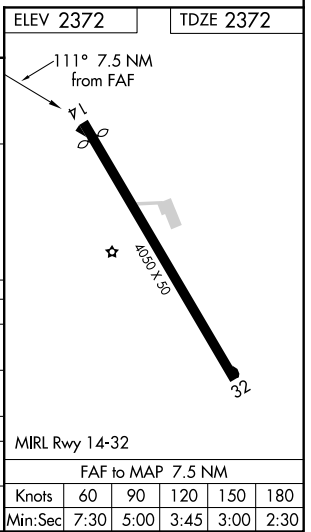
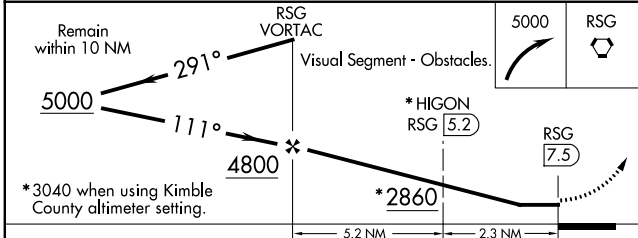
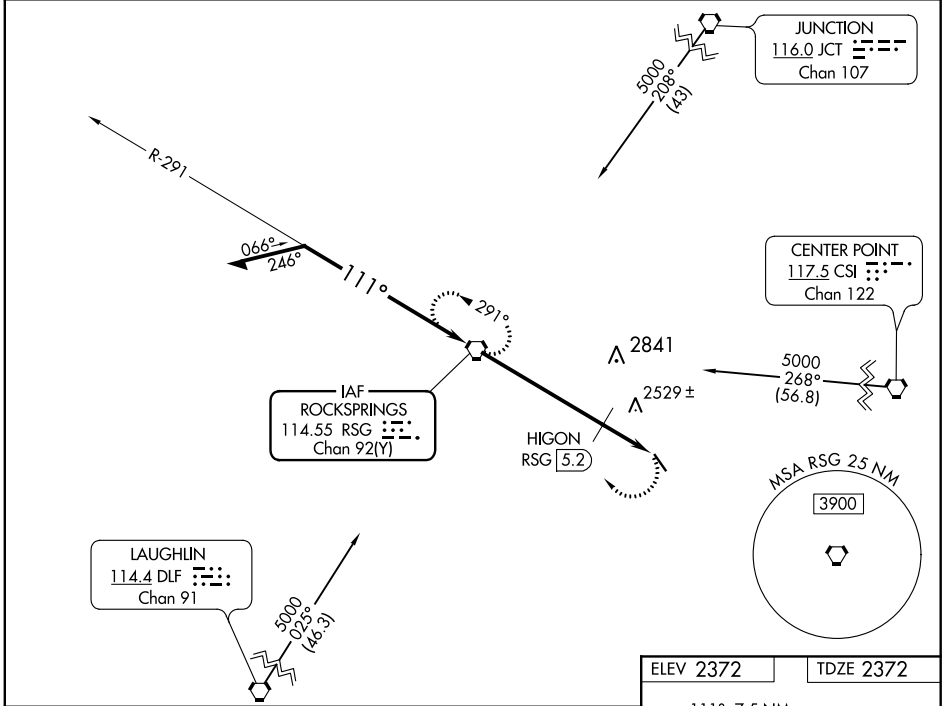
VOR RWY 14

EDWARDS COUNTY (ECU)

⚠ If local altimeter setting not received, use Kimble County altimeter setting and increase all MDAs 180 feet. VDP NA when using Kimble County altimeter setting. Visibility reduction by helicopters NA. Procedure NA at night. Helicopter visibility reduction below 1 SM NA.

⚠ MISSED APPROACH: Climbing right turn to 5000 direct RSG VORTAC and hold, continue climb-in-hold to 5000.

AWOS-3 118.175	DEL RIO APP CON * 119.6 259.1	CTAF 122.9
--------------------------	---	----------------------



CATEGORY	A	B	C	D
S-14	2860-1	488 (500-1)	2860-1¼ 488 (500-1¼)	NA
CIRCLING	2860-1	488 (500-1)	2860-1½ 488 (500-1½)	NA
HIGON FIX MINIMUMS				
S-14	2780-1	408 (500-1)	2780-1¼ 408 (500-1¼)	NA
C CIRCLING	2800-1 428 (500-1)	2840-1 468 (500-1)	2840-1½ 468 (500-1½)	NA

SC-3, 25 FEB 2021 to 25 MAR 2021

SC-3, 25 FEB 2021 to 25 MAR 2021