

WAAS CH <b>77901</b> <b>W14A</b>	APP CRS <b>138°</b>	Rwy Idg TDZE Apt Elev	<b>5000</b> <b>75</b> <b>75</b>
--	------------------------	-----------------------------	---------------------------------------

**RNAV (GPS) RWY 14**  
SOUTH TEXAS INTL AT EDINBURG (E.B.G)

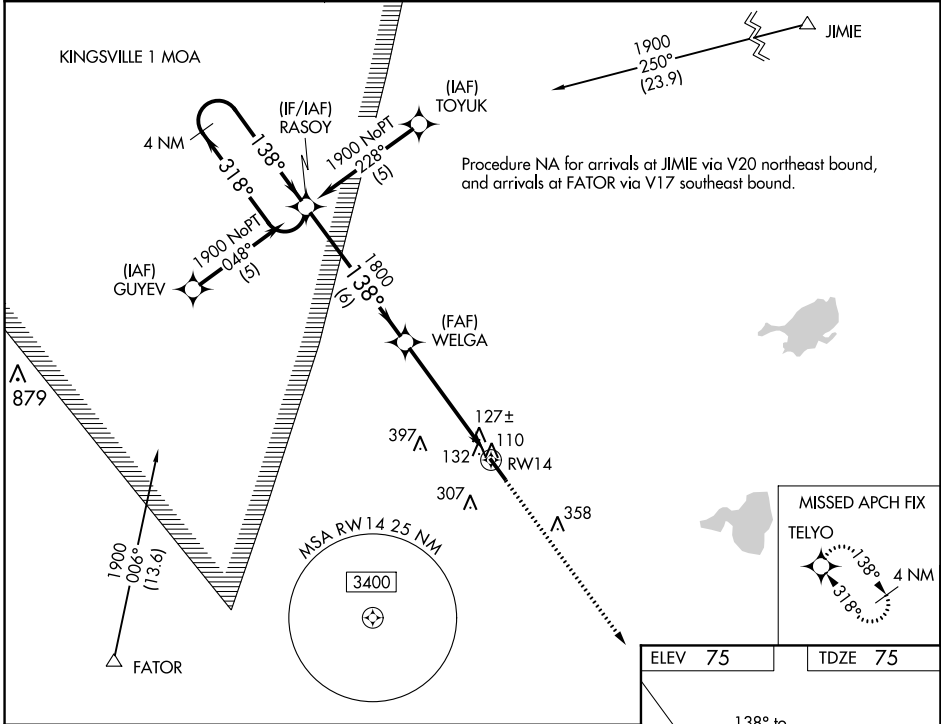
▼ Visibility reduction by helicopters NA. DME/DME RNP-0.3 NA. For uncompensated Baro-VNAV systems, LNAV/VNAV NA below -15°C (5°F) or above 48°C (120°F).

MISSED APPROACH: Climb to 1900 direct TELYO and hold.

AWOS-3  
**118.025**

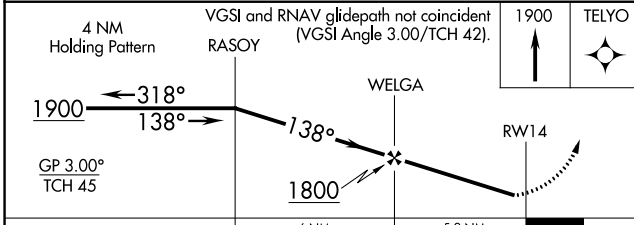
CORPUS APP CON  
**121.0 377.2**

UNICOM  
**122.8** (CTAF) **0**

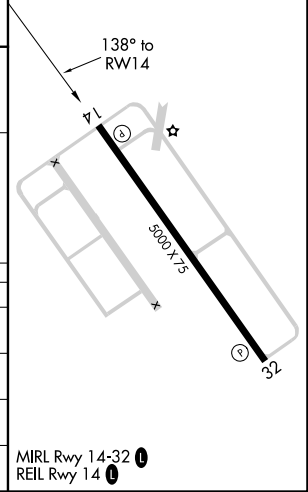


SC-3, 25 FEB 2021 to 25 MAR 2021

SC-3, 25 FEB 2021 to 25 MAR 2021



ELEV 75	TDZE 75
---------	---------



CATEGORY	A	B	C	D
LPV DA		325-1	250 (300-1)	
LNAV/VNAV DA		441-1¼	366 (400-1¼)	
LNAV MDA	440-1	365 (400-1)		440-1¼ 365 (400-1¼)
CIRCLING	500-1¼ 425 (500-1¼)	540-1¼ 465 (500-1¼)	620-1½ 545 (600-1½)	640-2 565 (600-2)

MIRL Rwy 14-32 **0**  
REIL Rwy 14 **0**