

LOC/DME I-EAU 109.5 Chan 32	APP CRS 224°	Rwy Idg TDZE Apt Elev	7301 913 913
---	------------------------	-----------------------------	---

ILS or LOC RWY 22

CHIPPEWA VALLEY RGNL (EAU)

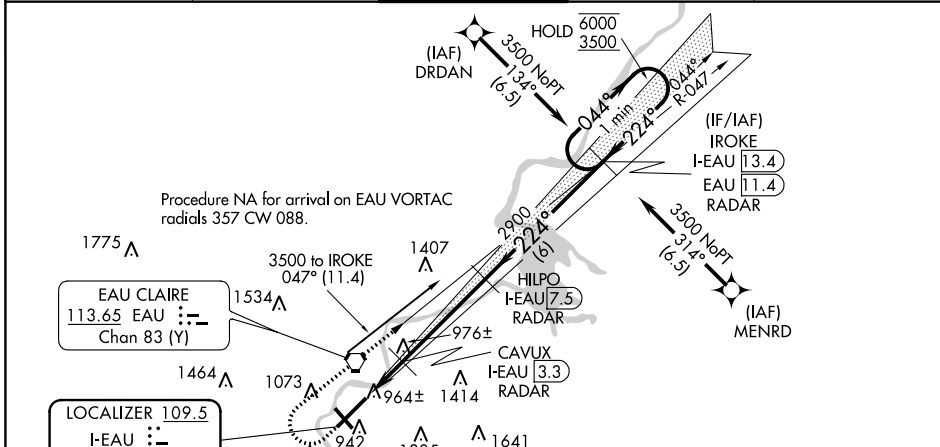
From DRDAN and MENRD RNAV-1 GPS required. DME or RADAR required.

⚠ For inop ALS increase S-LOC 22 Cat C and D visibility to 3/8 SM. For inop ALS when using Rice Lake altimeter setting, increase S-ILS 22 all Cats visibility to 1 SM. When local altimeter setting not received, use Rice Lake altimeter setting and increase DA 110 feet and all MDA 120 feet, increase S-LOC 22 Cat C and D and Circling Cat C visibility 1/4 SM. VDP NA when using Rice Lake altimeter setting.

MALSR

MISSED APPROACH: Climb to 1600 then climbing right turn to 3500 on EAU VORTAC R-047 to IROKE/I-EAU LOC/DME 13.4 DME/RADAR and hold.

ATS 126.025	MINNEAPOLIS CENTER 125.3 335.6	EAU CLAIRE TOWER ★ 118.575 (CTAF) 0	GND CON 120.925	UNICOM 122.95
-----------------------	--	---	---------------------------	-------------------------



Procedure NA for arrival on EAU VORTAC radials 357 CW 088.

EAU CLAIRE 113.65 EAU Chan 83 (Y)

LOCALIZER 109.5 I-EAU Chan 32

ALTERNATE MISSED APCH FIX

EAU CLAIRE EAU 113.65 Chan 83 (Y)

ELEV 913	D	TDZE 913			
HIRL Rwy 4-22					
MIRL Rwy 14-32					
REIL Rws 4 and 14					
224° 6.1 NM from FAF					
TWR 968					
FAF to MAP 6.1 NM					
Knots	60	90	120	150	180
Min:Sec	6:06	4:04	3:03	2:26	2:02

1600	3500	IROKE I-EAU 13.4 RADAR	Use I-EAU DME when on the localizer course.	One Minute Holding Pattern
*LOC only	*I-EAU 2.2	CAVUX I-EAU 3.3 RADAR	HILPO I-EAU 7.5 RADAR	IROKE I-EAU 13.4 RADAR
				GS 3.00° TCH 50

CATEGORY	A	B	C	D
S-ILS 22		1113-1/2	200 (200-1/2)	
S-LOC 22		1220-1/2	307 (400-1/2)	
C CIRCLING	1480-1 567 (600-1)	1540-1 627 (700-1)	1660-2/4 747 (800-2/4)	2200-3 1287 (1300-3)

EC-3, 25 FEB 2021 to 25 MAR 2021

EC-3, 25 FEB 2021 to 25 MAR 2021