

APP CRS 261°	Rwy Idg TDZE Apt Elev	N/A N/A 4776
------------------------	-----------------------------	---

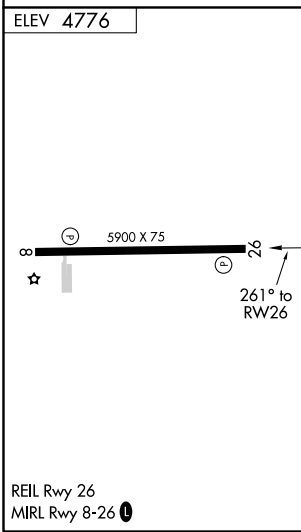
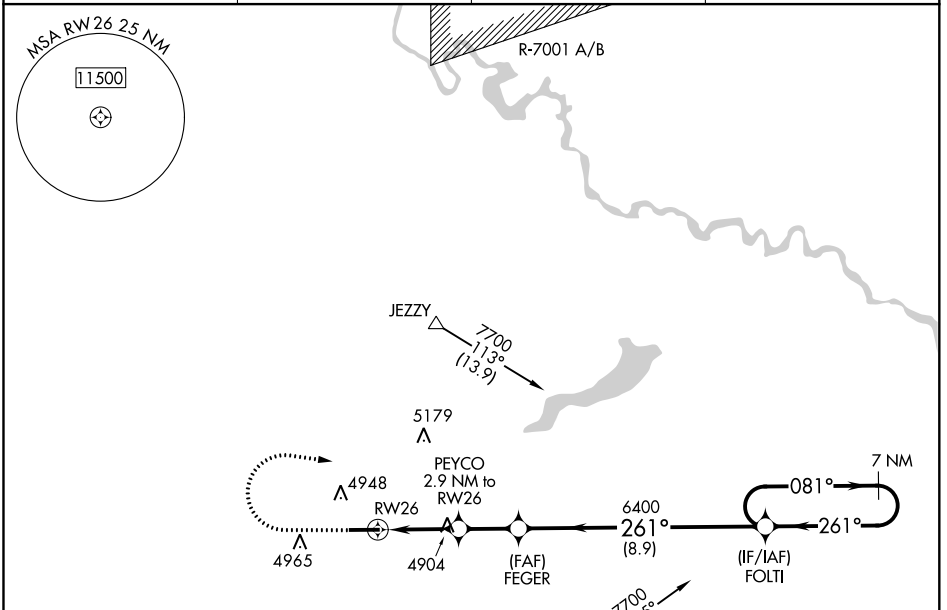
RNAV (GPS)-A

PHIFER AIRFIELD (E.A.N)

NA Use Torrington altimeter setting; when not received, use Western Nebraska Rgnl/ William B Heilig Field altimeter setting and increase all MDA 100 feet and Cat C visibility ¼ mile. DME/DME RNP-0.3 NA. Helicopter visibility reduction below 1 SM not authorized. Night landing: Rwy 8 NA.

MISSED APPROACH: Climb to 5500 then climbing right turn to 7700 direct FOLTI and hold.

AWOS-3PT 121.125	TOR ASOS 118.375	DENVER CENTER 135.6 363.025	CTAF 122.90
----------------------------	----------------------------	---------------------------------------	-----------------------



ELEV 4776	5179 A	5500	7700	FOLTI
5700	6400	7 NM Holding Pattern		
2.9 NM	2.2 NM	8.9 NM	7 NM Holding Pattern	
PEYCO 2.9 NM to RW26	FEGER	FOLTI	7 NM Holding Pattern	
RW26	5700	6400	7700	
2.9 NM	2.2 NM	8.9 NM	7 NM Holding Pattern	
CATEGORY	A	B	C	D
C CIRCLING	5420-1 644 (700-1)	5440-1 664 (700-1)	5460-2 684 (700-2)	NA

NW-1, 25 FEB 2021 to 25 MAR 2021

NW-1, 25 FEB 2021 to 25 MAR 2021