

ABILENE, TEXAS

VOR/DME RWY 34

VOR/DME TQA 111.6 Chan 53	APCH CRS 340°	Rwy Ldg 13,500 TDZE 1788 Arprt Elev 1790
---	-------------------------	---

AL-2 [USAF]

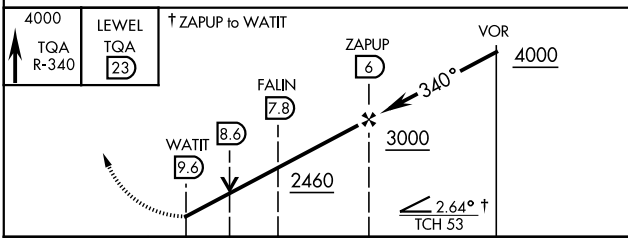
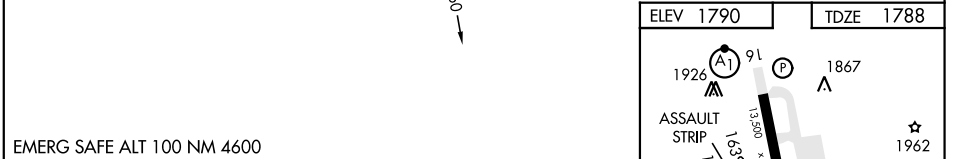
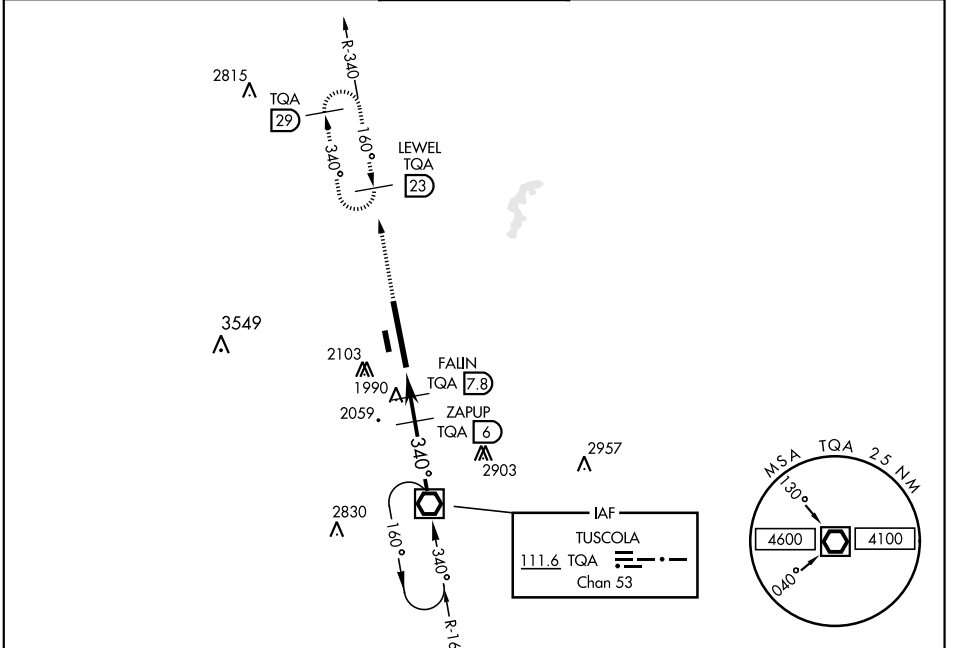
DYESS AFB (KDYS)

* When ALS inop, increase CAT AB RVR to 55 and vis to 1 mile, CAT CDE RVR vis to 1 3/8 miles.
 ** Circling to other than Rwy 16 NA



MISSED APPROACH: Climb to 4000 via TQA VOR/DME R-340 to LEWEL and hold.

ATIS ★ 269.175	ABILENE APP CON 125.0 338.3 EAST 127.2 282.3 WEST	DYESS TOWER 133.0 257.675	GND CON 118.35 275.8	ASR
--------------------------	---	-------------------------------------	--------------------------------	-----



ELEV 1790	TDZE 1788
1926 (A1) 91 (P)	1867 (A)
ASSAULT STRIP	TWR 1924 (A) 1906 (★)
1904 (A)	1985 (A)
ASSAULT STRIP	34 (A1)
LIRL Rwy 164°-344°	340° 4.1 NM from FAF
HIRL Rwy 16-34	FAF to MAP 3.6 NM
	Knots
	60 90 120 150 180
	Min:Sec 3:36 2:24 1:48 1:26 1:12

CATEGORY	A	B	C	D	E
S-34 *	2260/24	472 (500-1/2)	2260/50	472 (500-1)	
CIRCLING **	2300-1 510 (600-1)	2320-1 530 (600-1)	2460-1 3/4 670 (700-1 3/4)	2460-2 670 (700-2)	2460-2 1/4 670 (700-2 1/4)

ABILENE, TEXAS 32°25' -99°51'W DYESS AFB (KDYS)

Amdt 3 10NOV16

VOR/DME RWY 34

SC-2, 25 FEB 2021 to 25 MAR 2021

SC-2, 25 FEB 2021 to 25 MAR 2021