

ABILENE, TEXAS

ILS or LOC W RWY 16

LOC I-TYY 109.9	APCH CRS 164°	Rwy Ldg 13,500 TDZE 1790 Arprt Elev 1790
---------------------------	-------------------------	---

AL-2 [USAF]

DYESS AFB (KDYS)

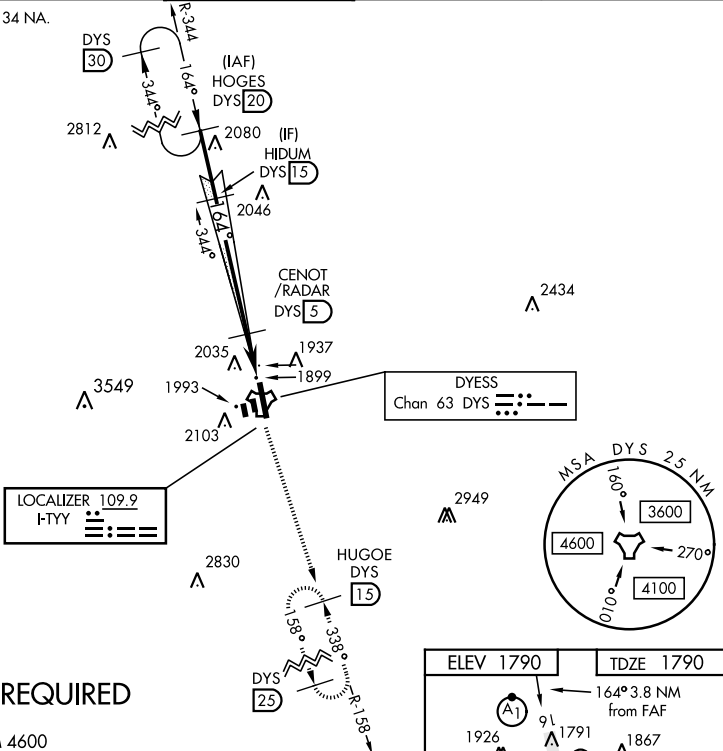
* When ALS inop, increase all CAT RVR to 40 and vis to 3/4 mile.
 ** When ALS inop, increase CAT AB RVR to 55 and vis to 1 mile, CAT CDE vis to 1 1/4 miles.

ALSF-1

MISSED APPROACH: Climb to 4000 via DYS TACAN R-158 to HUGOE and hold.

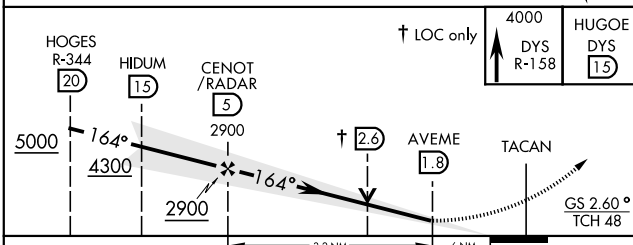
ATIS ★ 269.175	ABILENE APP CON 125.0 338.3 EAST 127.2 282.3 WEST	DYESS TOWER 133.0 257.675	GND CON 118.35 275.8	ASR
--------------------------	---	-------------------------------------	--------------------------------	-----

*** Circling to other than Rwy 34 NA.

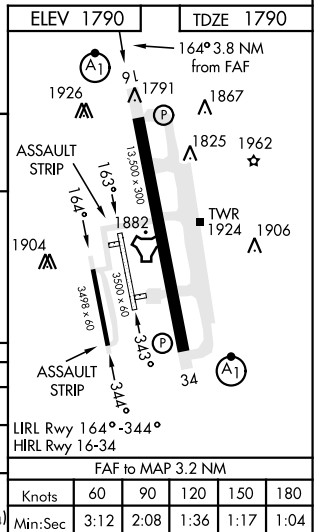


RADAR or DME REQUIRED

EMERG SAFE ALT 100 NM 4600



CATEGORY	A	B	C	D	E
S-ILS 16 *	1990/24		200	(200-1/2)	
S-LOC 16 **	2220/24	430 (500-1/2)	2220/40	430	(500-3/4)
CIRCLING ***	2300-1 510 (600-1)	2320-1 530 (600-1)	2460-1 3/4 670 (700-1 3/4)	2460-2 670 (700-2)	2460-2 1/4 670 (700-2 1/4)



ABILENE, TEXAS

32°25'N-99°51'W

DYESS AFB (KDYS)

Amtd 3 10NOV16

ILS or LOC W RWY 16

SC-2, 25 FEB 2021 to 25 MAR 2021

SC-2, 25 FEB 2021 to 25 MAR 2021