

HI-ILS or LOC X RWY 34

LOC I-DYS 109.9	APCH CRS 344°	Rwy ldg 13,500 TDZE 1788 Arprt Elev 1790
---------------------------	-------------------------	---

JAL-2 [USAF]

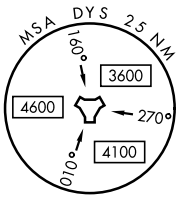
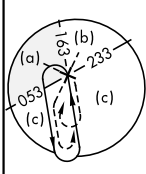
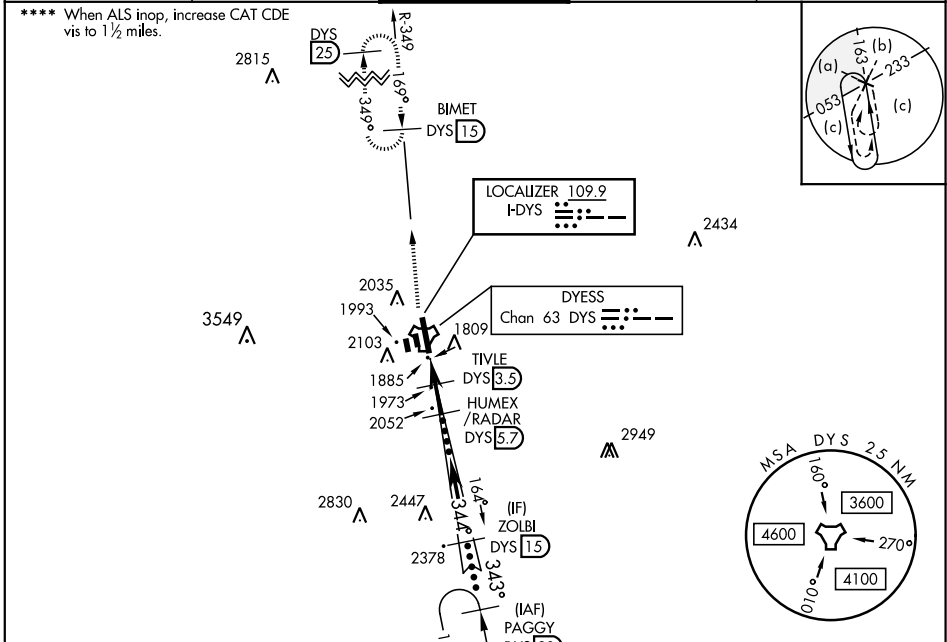
DYESS AFB (KDYS)

* When ALS inop, increase CAT CDE RVR to 40 and vis to 3/4 mile.
 ** When ALS inop, increase CAT CDE vis to 1 1/2 miles.
 *** Circling to other than Rwy 16 NA.



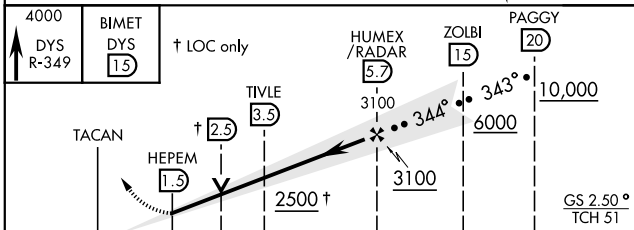
MISSED APPROACH: Climb to 4000 via DYS TACAN R-349 to BIMET and hold.

ATIS ★ 269.175	ABILENE APP CON 125.0 338.3 EAST 127.2 282.3 WEST	DYESS TOWER 133.0 257.675	GND CON 118.35 275.8	ASR
--------------------------	---	-------------------------------------	--------------------------------	-----

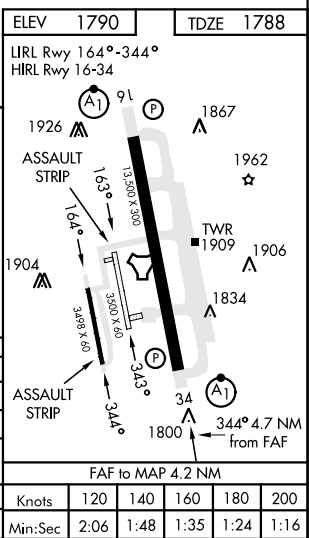


RADAR or DME REQUIRED

EMERG SAFE ALT 100 NM 4600



CATEGORY	C	D	E
S-ILS 34 *	1988/24	200 (200-1/2)	
S-LOC 34 **	2240/45	452 (500-2/3)	
CIRCLING ***	2460-1 3/4 670 (700-1 1/2)	2460-2 670 (700-2)	2460-2 1/4 670 (700-2 1/2)
WITHOUT LAST STEPDOWN FIX			
S-LOC 34 ****	2320/55	532 (600-1)	



ELEV 1790	TDZE 1788				
LIRL Rwy 164°-344°	HIRL Rwy 16-34				
Knots	120	140	160	180	200
Min:Sec	2:06	1:48	1:35	1:24	1:16

HI-ILS or LOC X RWY 34

SC-2, 25 FEB 2021 to 25 MAR 2021

SC-2, 25 FEB 2021 to 25 MAR 2021