

# IZZ0 SEVEN DEPARTURE (RNAV)

AL-6646 (FAA)

PHOENIX DEER VALLEY (DVT)  
PHOENIX, ARIZONA

SW-4, 25 FEB 2021 to 25 MAR 2021

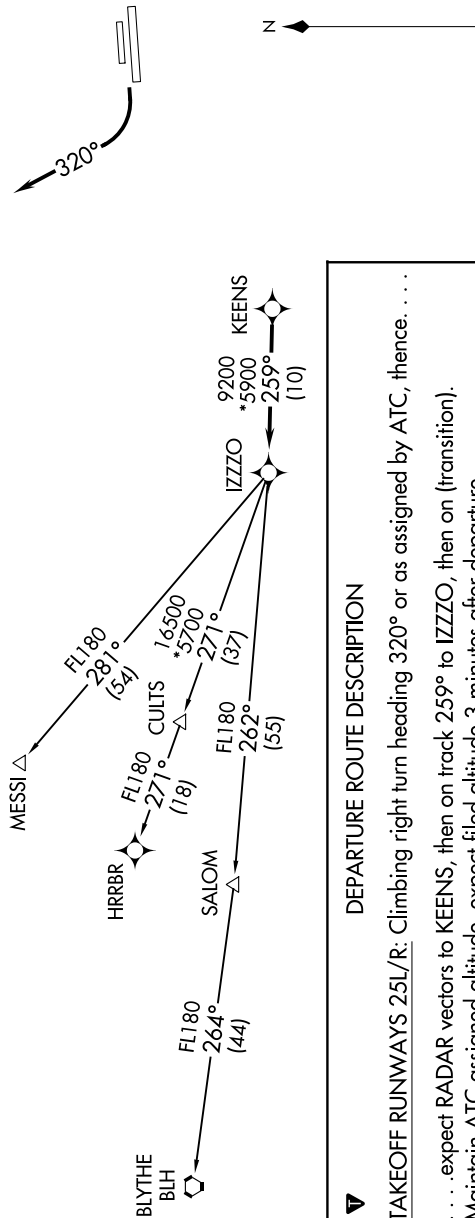
### TOP ALTITUDE: ASSIGNED BY ATC

ATIS 126.5  
 CLNC DEL 123.9  
 GND CON 121.8  
 DEER VALLEY TOWER\* 118.4 (Rwy 7R-25L)  
 120.2 (Rwy 7L-25R)  
 PHOENIX DEP CON 120.7 239.0

- NOTE: RNAV 1.  
 NOTE: Turbojets and turboprops only.  
 NOTE: RADAR required.  
 NOTE: GPS required.  
 NOTE: Aircraft requesting FL220 and below must file BLYTHE TRANSITION.  
 NOTE: Turbojets landing LAX, file MESSI TRANSITION.  
 NOTE: Aircraft landing other than LAX and turboprops landing at LAX: Requesting FL240 and above, file HRRBR TRANSITION.  
 NOTE: Aircraft departing KGEU and KGYR ATC assigned only.

### TAKEOFF MINIMUMS

Rwys 7L/R: NA - Obstacles.  
 Rwys 25L/R: Standard with minimum climb of 370' per NM to 4600.



### DEPARTURE ROUTE DESCRIPTION

**TAKEOFF RUNWAYS 25L/R:** Climbing right turn heading 320° or as assigned by ATC, thence . . . . .  
 . . . . . expect RADAR vectors to KEENS, then on track 259° to IZZO, then on (transition).  
 Maintain ATC assigned altitude, expect filed altitude 3 minutes after departure.

- BLYTHE TRANSITION (IZZ07.BLH)
- HRRBR TRANSITION (IZZ07.HRRBR)
- MESSI TRANSITION (IZZ07.MESSI)

NOTE: Chart not to scale.

# IZZ0 SEVEN DEPARTURE (RNAV)

SW-4, 25 FEB 2021 to 25 MAR 2021