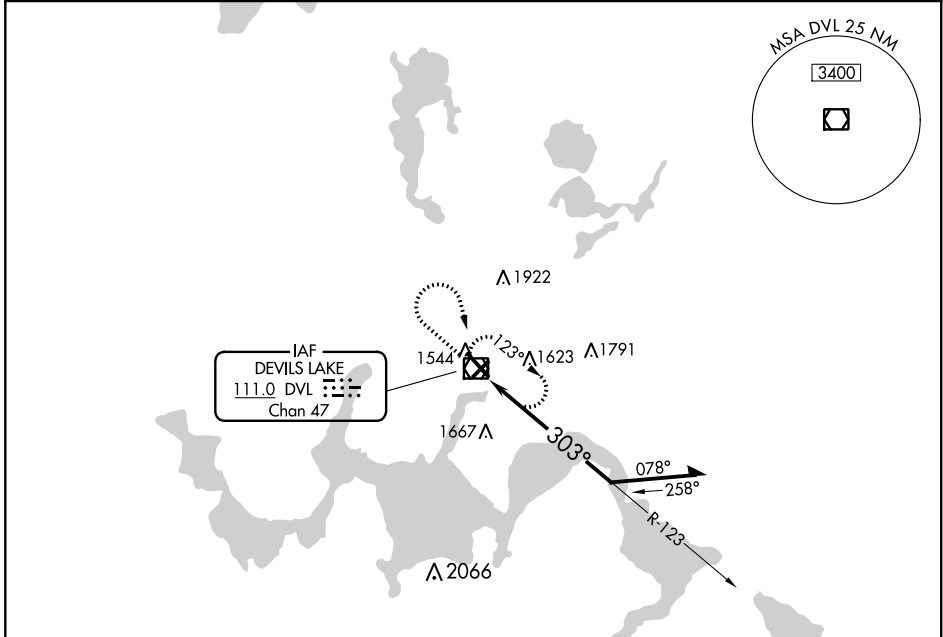


VOR/DME DVL <b>111.0</b> Chan <b>47</b>	APP CRS <b>303°</b>	Rwy Idg TDZE <b>1450</b> Apt Elev <b>1470</b>
---	------------------------	---

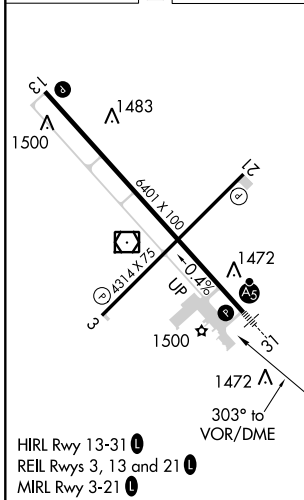
**VOR RWY 31**  
DEVILS LAKE RGNL (DVL)

<b>⚠</b> When local altimeter setting not received, use Cando altimeter setting and increase all MDA 80 feet, increase S-31 Cats C and D visibility 1/8 mile, and Circling Cats C and D visibility 1/4 mile.	MALSRR <b>AS</b>	MISSED APPROACH: Climb to 3200 then right turn direct DVL VOR/DME and hold.
--	---------------------	---

AWOS-3PT <b>125.875</b>	MINNEAPOLIS CENTER <b>124.2 270.3</b>	UNICOM <b>122.8 (CTAF)</b>
----------------------------	--	-------------------------------



ELEV 1470	<b>D</b>	TDZE 1450
-----------	----------	-----------



3200	DVL	DVL VOR/DME	Remain within 10 NM
↑	↪	↻	

CATEGORY	A	B	C	D
S-31	2020-1/2 570 (600-1/2)		2020-1 570 (600-1 1/4)	
<b>C</b> CIRCLING	2020-1 550 (600-1)		2240-2 1/4 770 (800-2 1/4)	2240-2 1/2 770 (800-2 1/2)

NC-1, 25 FEB 2021 to 25 MAR 2021

NC-1, 25 FEB 2021 to 25 MAR 2021