

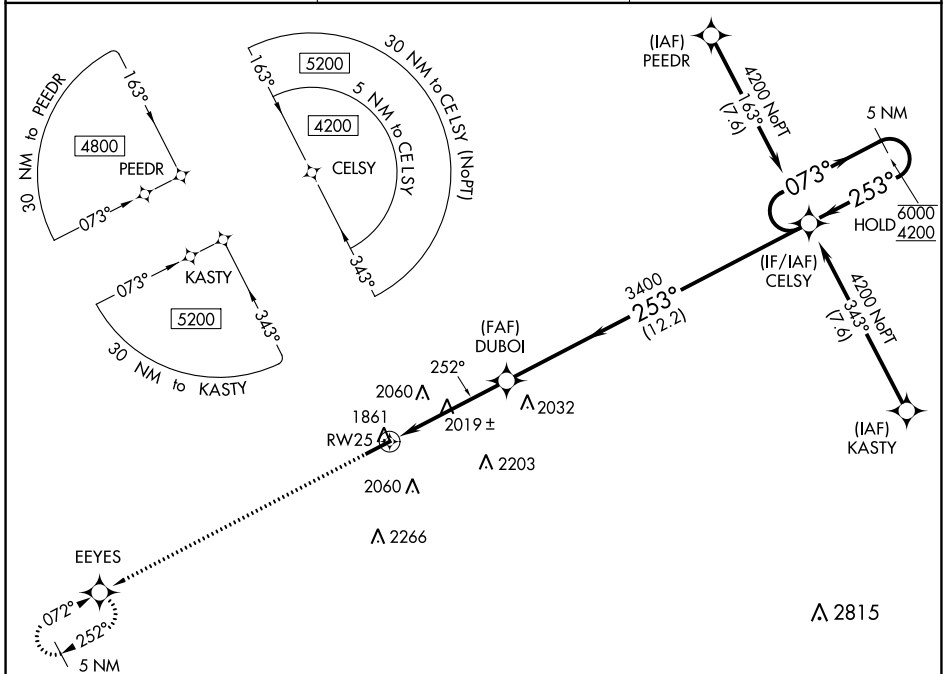
WAAS CH <b>97407</b> <b>W25A</b>	APP CRS <b>252°</b>	Rwy Idg TDZE Apt Elev	<b>5503</b> <b>1817</b> <b>1817</b>
--	------------------------	-----------------------------	---

# RNAV (GPS) RWY 25

DUBOIS RGNL (DUJ)

RNP APCH.	MALS R	MISSED APPROACH: Climb to 4200 direct EEYES and hold.
<p><b>⚠</b> Circling NA for Cat D south of Rwy 7-25. For uncompensated Baro-VNAV systems, LNAV/VNAV NA below -21°C or above 54°C. For inop ALS increase LNAV Cat C/D visibility to 1½ SM.</p>		

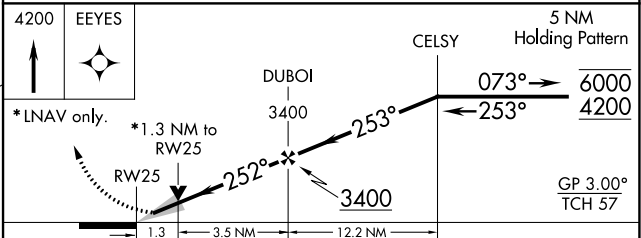
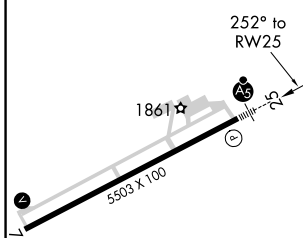
ASOS <b>119.025</b>	CLEVELAND CENTER <b>126.725 291.65</b>	UNICOM <b>123.0</b> (CTAF) <b>①</b>
------------------------	---	--



NE-4, 25 FEB 2021 to 25 MAR 2021

NE-4, 25 FEB 2021 to 25 MAR 2021

ELEV	1817	<b>D</b>	TDZE	1817
------	------	----------	------	------



CATEGORY	A	B	C	D
LPV DA	2017-½ 200 (200-½)			
LNAV/VNAV DA	2140-½ 323 (400-½)			
LNAV MDA	2280-½ 463 (500-½)		2280-1 463 (500-1)	
<b>C</b> CIRCLING	2320-1 503 (600-1)	2360-1 543 (600-1)	2380-1½ 563 (600-1½)	2400-2 583 (600-2)

HIRL Rwy 7-25 **①**  
REIL Rwy 7 **①**