

(ZETTR3.ZETTR) 19339

AL-119 (FAA)

ZETTR THREE DEPARTURE (RNAV) Departure Routes

DETROIT METROPOLITAN WAYNE COUNTY (DTW)

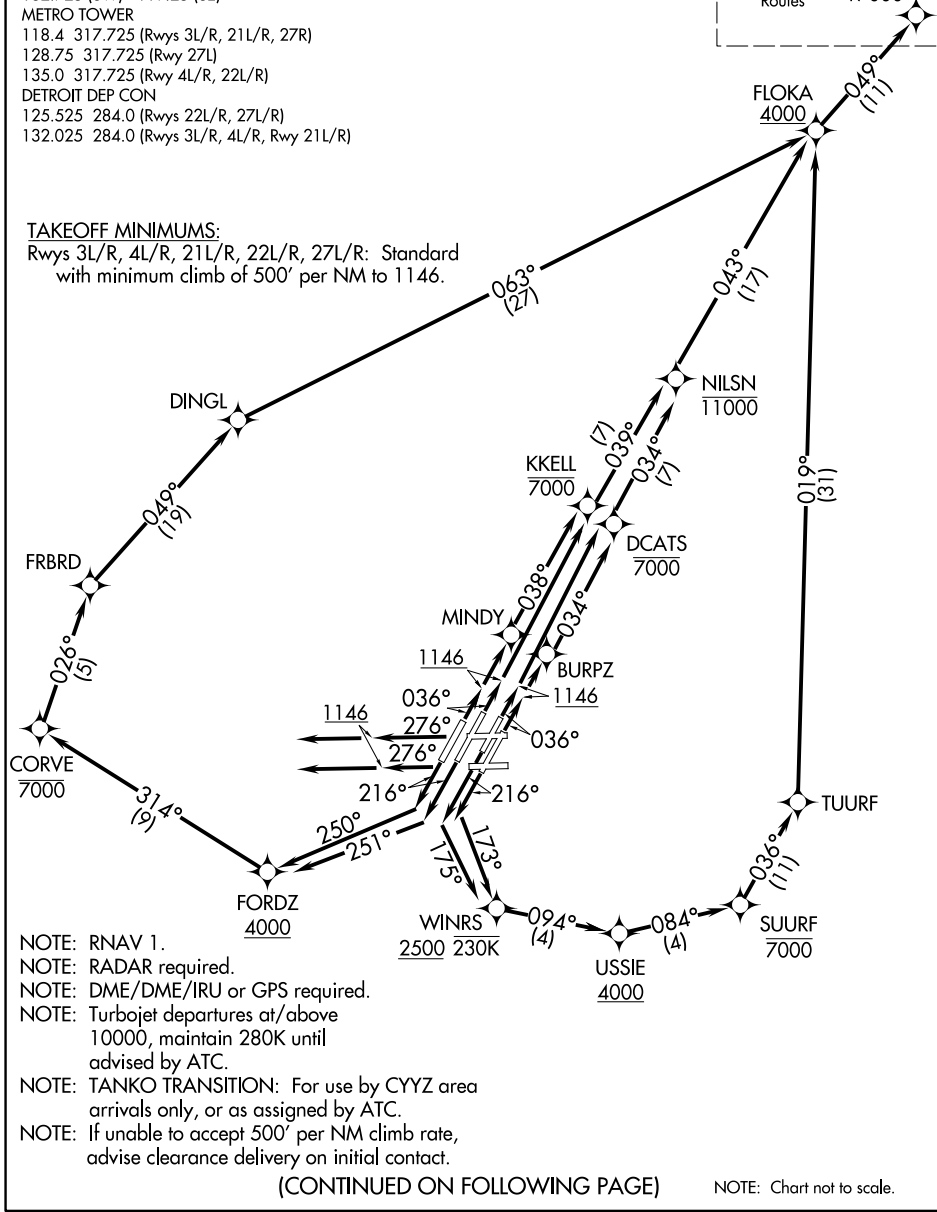
DETROIT, MICHIGAN

D-ATIS 118.125
 CLNC DEL 120.65
 CPDLC
 GND CON
 121.8 (NW) 119.45 (NE)
 132.725 (SW) 119.25 (SE)
 METRO TOWER
 118.4 317.725 (Rwys 3L/R, 21L/R, 27R)
 128.75 317.725 (Rwy 27L)
 135.0 317.725 (Rwy 4L/R, 22L/R)
 DETROIT DEP CON
 125.525 284.0 (Rwys 22L/R, 27L/R)
 132.025 284.0 (Rwys 3L/R, 4L/R, Rwy 21L/R)

**TOP ALTITUDE:
17000**

See following page for Transition Routes **ZETTR 17000**

TAKEOFF MINIMUMS:
 Rwys 3L/R, 4L/R, 21L/R, 22L/R, 27L/R: Standard with minimum climb of 500' per NM to 1146.



- NOTE: RNAV 1.
- NOTE: RADAR required.
- NOTE: DME/DME/IRU or GPS required.
- NOTE: Turbojet departures at/above 10000, maintain 280K until advised by ATC.
- NOTE: TANKO TRANSITION: For use by CYYZ area arrivals only, or as assigned by ATC.
- NOTE: If unable to accept 500' per NM climb rate, advise clearance delivery on initial contact.

(CONTINUED ON FOLLOWING PAGE)

NOTE: Chart not to scale.

EC-1, 25 FEB 2021 to 25 MAR 2021

EC-1, 25 FEB 2021 to 25 MAR 2021

ZETTR THREE DEPARTURE (RNAV) Departure Routes

DETROIT, MICHIGAN

(ZETTR3.ZETTR) 05DEC19

DETROIT METROPOLITAN WAYNE COUNTY (DTW)