

WAAS CH 81820 W21A	APP CRS 216°	Rwy Idg 10001 TDZE 632 Apt Elev 645
--	------------------------	--

RNAV (GPS) Z RWY 21L

DETROIT METROPOLITAN WAYNE COUNTY (DTW)

RNP APCH

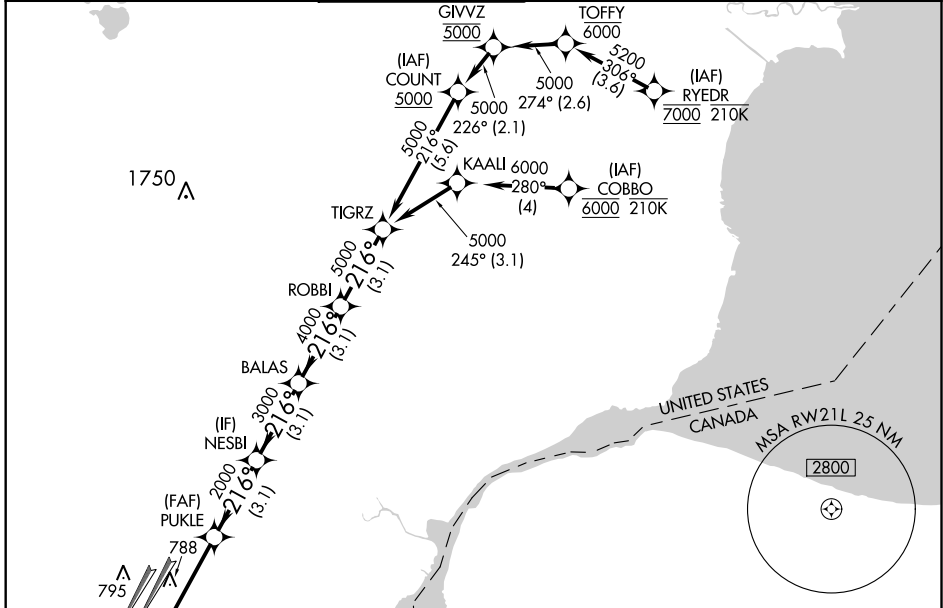
▼ LNAV procedure NA during simultaneous operations. For uncompensated Baro-VNAV systems, LNAV/VNAV NA below -19°C or above 54°C. For inop ALS increase LNAV Cats C and D visibility to RVR 6000. Simultaneous approach authorized. Use of FD or AP required during simultaneous operations. **RVR 1800 authorized with use of FD or HUD to DA.

MALSR

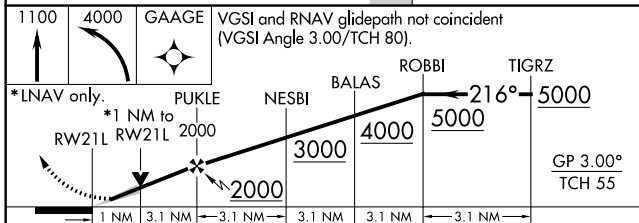


MISSED APPROACH: Climb to 1100 then climbing left turn to 4000 direct GAAGE and hold, continue climb-in hold to 4000.

D-ATIS 133.675	DETROIT APP CON 125.15 284.0	METRO TOWER 118.4 317.725	GND CON 121.8 (NW) 119.45 (NE) 132.725 (SW) 119.25 (SE)	CLNC DEL 120.65	CPDLC
--------------------------	--	-------------------------------------	---	---------------------------	-------



ELEV 645	TDZE 632
----------	----------



CATEGORY	A	B	C	D
LPV DA**		832/24	200 (200-½)	
LNAV/VNAV DA		1062/40	430 (500-¾)	
LNAV MDA	1040/24	408 (400-½)	1040/40	408 (400-¾)
CIRCLING	1180-1	535 (600-1)	1180-½ 535 (600-½)	1240-2 595 (600-2)

HIRL all runways
REIL Rwy 3L, 9L, 9R and 21R
TDZ/CL Rwy 3R, 4L, 4R and 22R

EC-1, 25 FEB 2021 to 25 MAR 2021

EC-1, 25 FEB 2021 to 25 MAR 2021