

DETROIT, MICHIGAN

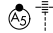
AL-119 (FAA)

# RNAV (GPS) PRM Y RWY 22R (CLOSE PARALLEL)

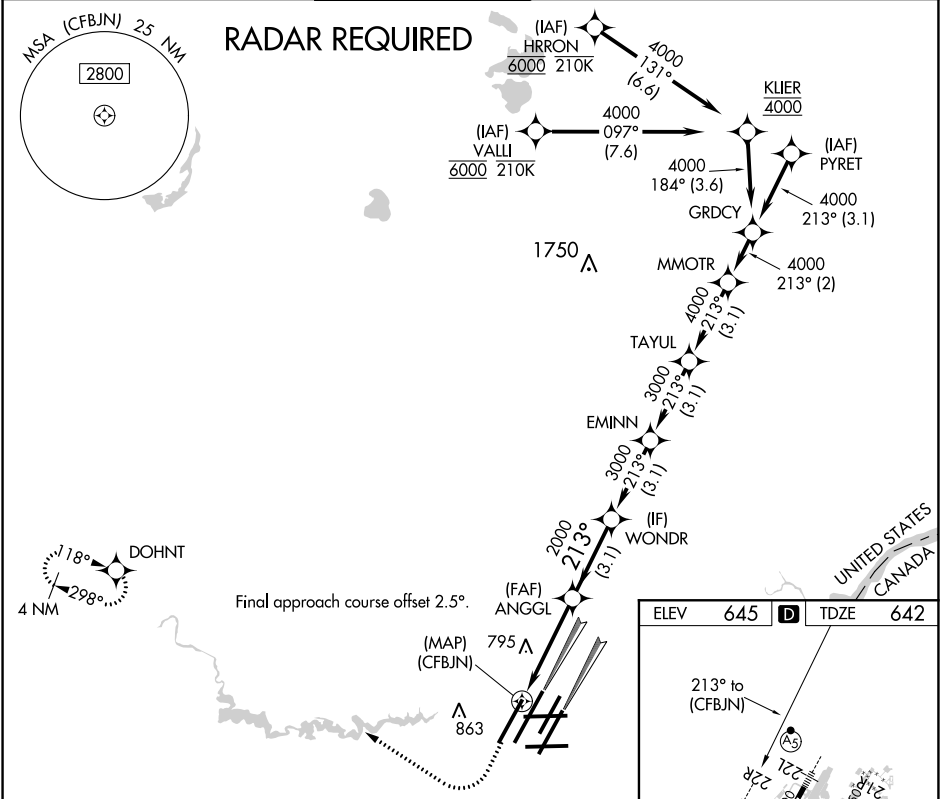
DETROIT METROPOLITAN WAYNE COUNTY (DTW)

WAAS CH <b>42939</b> <b>W22B</b>	APP CRS <b>213°</b>	Rwy Idg TDZE <b>642</b> Apt Elev <b>645</b>
--	------------------------	---

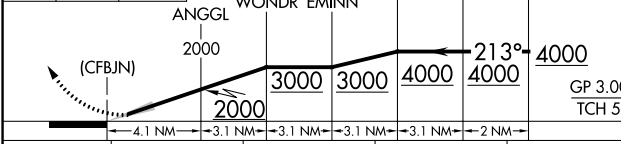
▼ For uncompensated Baro-VNAV systems, LNAV/VNAV NA below -19°C (-2°F) or above 54°C (130°F). DME/DME RNP-0.3 NA. Use of FD or AP providing RNAV track guidance required during simultaneous operations. Simultaneous approach authorized. Dual VHF comm required. See additional requirements on AAUP.

MALSR  MISSED APPROACH: Climb to 1100 then climbing right turn to 4000 direct DOHNT and hold.

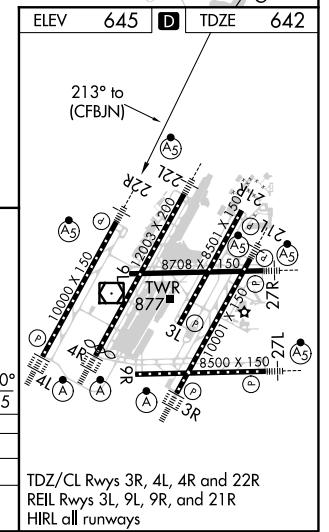
D-ATIS <b>133.675</b>	DETROIT APP CON <b>124.05 284.0</b>	METRO TOWER <b>135.0 317.725</b> <b>PRM 127.05</b>	GND CON <b>121.8 (NW) 119.45 (NE)</b> <b>132.725 (SW) 119.25 (SE)</b>	CLNC DEL <b>120.65</b>	CPDLC
--------------------------	--	--	---	---------------------------	-------



1100 4000 DOHNT  
 ↑ ↘ ⬠  
 VGSI and RNAV glidepath not coincident (VGSI Angle 3.00/TCH 71).



CATEGORY	A	B	C	D
LPV DA		892/24	250 (300-½)	
LNAV/VNAV DA		1050/45	408 (500-¾)	



TDZ/CL Rws 3R, 4L, 4R and 22R  
 REIL Rws 3L, 9L, 9R, and 21R  
 HIRL all runways

EC-1, 25 FEB 2021 to 25 MAR 2021

EC-1, 25 FEB 2021 to 25 MAR 2021

DETROIT, MICHIGAN  
Orig 10NOV16

42°13'N-83°21'W

DETROIT METROPOLITAN WAYNE COUNTY (DTW)

# RNAV (GPS) PRM Y RWY 22R (CLOSE PARALLEL)