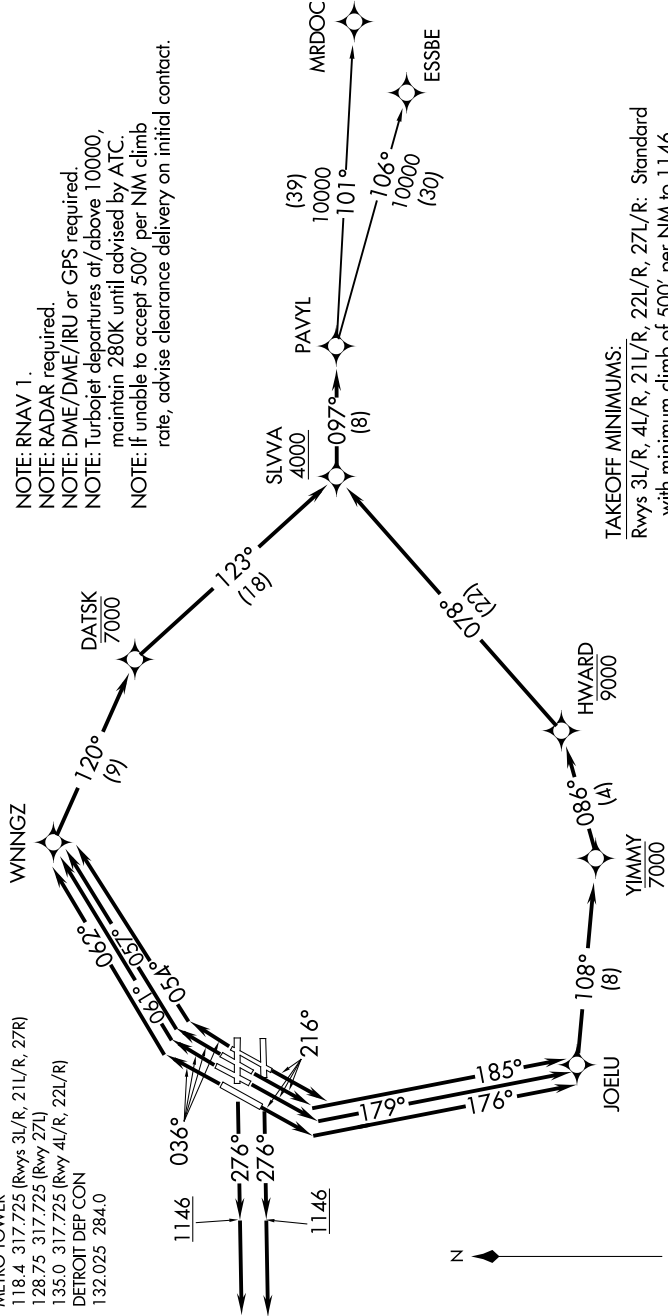


TOP ALTITUDE:
17000

NOTE: RNAV 1.
NOTE: RADAR required.
NOTE: DME/DME/IRU or GPS required.
NOTE: Turbojet departures at/above 10000, maintain 280K until advised by ATC.
NOTE: If unable to accept 500' per NM climb rate, advise clearance delivery on initial contact.

TAKEOFF MINIMUMS:
Rwys 3L/R, 4L/R, 21L/R, 22L/R, 27L/R: Standard with minimum climb of 500' per NM to 1146.



EC-1, 25 FEB 2021 to 25 MAR 2021

(NARRATIVE ON FOLLOWING PAGE)

EC-1, 25 FEB 2021 to 25 MAR 2021

NOTE: Chart not to scale.