

DETROIT, MICHIGAN

AL-119 (FAA)

20254

LOC/DME I-JKI 111.95	APP CRS 216°	Rwy Idg TDZE Apt Elev	10000 642 645
Chan 56 (Y)			

ILS PRM Z RWY 22R (SA CAT I & II) (CLOSE PARALLEL)

DETROIT METROPOLITAN WAYNE COUNTY (DTW)

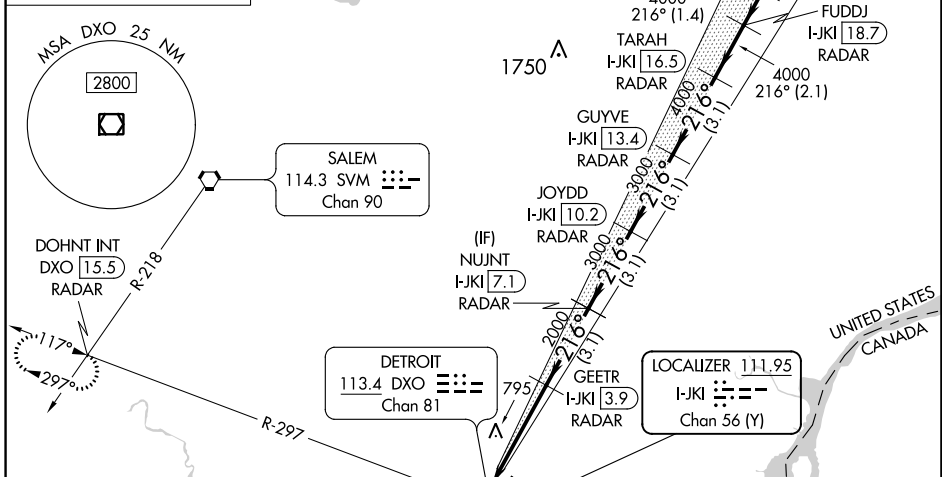
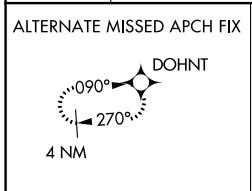
RNAV 1-GPS, HRRON and VALLI: RNAV 1-DME/DME/IRU or GPS required.
Aircraft not DME/DME/IRU or GPS equipped - RADAR required for procedure entry.

Simultaneous approach authorized. Use of FD or AP required during simultaneous operations. Dual VHF Comm required. See additional requirements on AAUP.
SA CAT I: Requires specific OPSPEC, MSPEC, or LOA approval and use of HUD to DH.
SA CAT II: Reduced lighting: Requires specific OPSPEC, MSPEC, or LOA approval and use of autoland or HUD to touchdown.

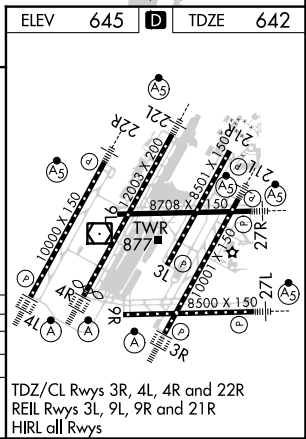
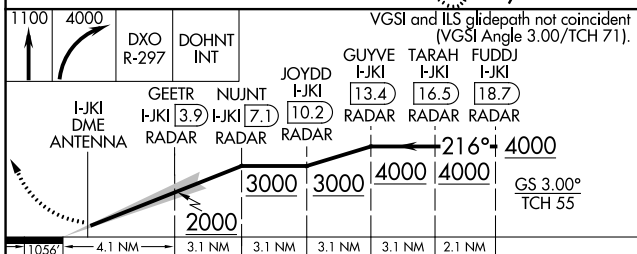
MALSR

MISSED APPROACH: Climb to 1100 then climbing right turn to 4000 on DXO YOR/DME R-297 to DOHNT INT/DXO 15.5 DME/RADAR and hold.

D-ATIS 133.675	DETROIT APP CON 124.05 284.0	METRO TOWER 135.0 317.25 PRM 127.05	GND CON 121.8 (NW) 119.45 (NE) 132.725 (SW) 119.25 (SE)	CLNC DEL 120.65	CPDLC
--------------------------	--	---	---	---------------------------	-------



ELEV	645	TDZE	642
------	-----	------	-----



CATEGORY	A	B	C	D
S-ILS 22R		SA CAT I	RA 148/14	150 DA 792
S-ILS 22R		SA CAT II	RA 98/12	100 DA 742

SA CATEGORY I & II ILS - SPECIAL AIRCREW & AIRCRAFT CERTIFICATION REQUIRED

DETROIT, MICHIGAN 42°13'N-83°21'W DETROIT METROPOLITAN WAYNE COUNTY (DTW)
 Orig-B 30JAN20 ILS PRM Z RWY 22R (SA CAT I & II) (CLOSE PARALLEL)

EC-1, 25 FEB 2021 to 25 MAR 2021

EC-1, 25 FEB 2021 to 25 MAR 2021