

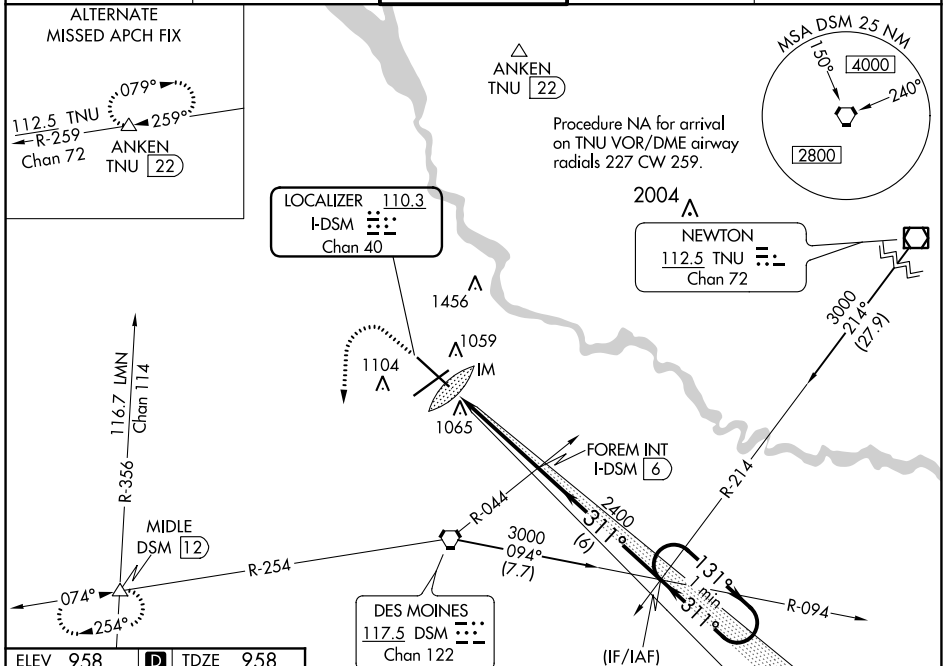
LOC/DME I-DSM 110.3 Chan 40	APP CRS 311°	Rwy ldg TDZE Apt Elev	9001 958 958
--	------------------------	-----------------------------	---

ILS RWY 31 (SA CAT I)

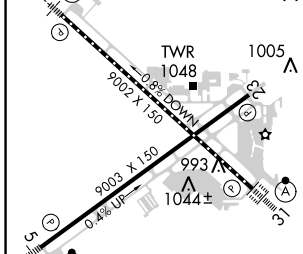
DES MOINES INTL (DSM)

<p>Requires specific OPSPEC, MSPEC, or LOA approval and use of HUD to DH.</p>	<p>ALSIF-2</p>	<p>MISSED APPROACH: Climb to 1600 then climbing left turn to 3000 on heading 180° and on DSM VORTAC R-254 to MIDDLE INT/12 DME and hold.</p>
	<p>ALSIF-2</p>	

ATIS 119.55	DES MOINES APP CON 123.9 307.15	DES MOINES TOWER 118.3 257.8	GND CON 121.9 348.6	CLNC DEL 134.15 317.55
-----------------------	---	--	-------------------------------	----------------------------------



ELEV 958	D	TDZE 958
----------	----------	----------



Procedure NA for arrival on DSM VORTAC airway radials 042 CW 141.

1600 3000 DSM R-254 MIDDLE VGS1 and ILS glidepath not coincident (VGS1 Angle 3.00/TCH 56). One Minute Holding Pattern.

CGYLN INT I-DSM 11.9

FOREM INT I-DSM 6

311° 131° 3000

2400 2400

IM

4.4 NM 6 NM

GS 3.00° TCH 52

CATEGORY	A	B	C	D
S-ILS 31	RA 159/14 150 DA 1108			

REIL Rwy 23
TDZ/CL Rwy 31
HIRL Rwy 13-31 and 5-23

SA CATEGORY I ILS-SPECIAL AIRCREW & AIRCRAFT CERTIFICATION REQUIRED

NC-3, 25 FEB 2021 to 25 MAR 2021

NC-3, 25 FEB 2021 to 25 MAR 2021