

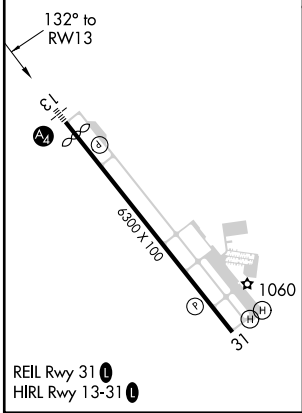
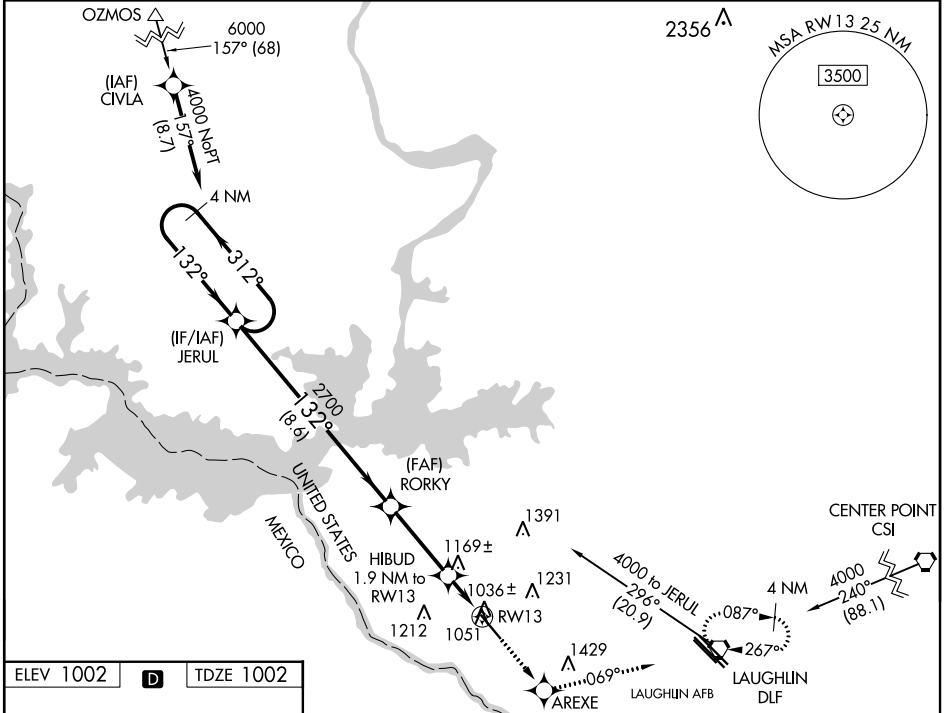
WAAS CH <b>86499</b> <b>W13A</b>	APP CRS <b>132°</b>	Rwy Idg TDZE Apt Elev	<b>6000</b> <b>1002</b> <b>1002</b>
--	------------------------	-----------------------------	---

# RNAV (GPS) RWY 13

DEL RIO INTL (DRT)

RNP APCH.	MALS	MISSED APPROACH: Climb to 4000 direct AREXE and on 069° track to DLF VORTAC and hold, continue climb-in-hold to 4000.
<p>⚠ Circling NA for Cat D southwest of Rwy 13-31. When local altimeter setting not received, use Laughlin AFB altimeter setting and increase all DA 30 feet and all MDA 40 feet, increase LPV visibility all Cats, LNAV visibility Cats C and D and Circling visibility Cat D ½ mile. Baro-VNAV NA when using Laughlin AFB altimeter setting. For uncompensated Baro-VNAV systems, LNAV/VNAV NA below -17° C (2°F) or above 47°C (116°F).</p>		

ASOS <b>118.525</b>	DEL RIO APP CON * <b>119.6 259.1</b>	CLNC DEL <b>120.5</b>	UNICOM <b>122.8 (CTAF)</b>
------------------------	---	--------------------------	-------------------------------



VGSI and RNAV glidepath not coincident (VGSI Angle 3.00/TCH 47).		4000	AREXE	tr 069°	DLF
Holding Pattern JERUL					
GP 3.00° TCH 48		4000	2700	* HIBUD 1.9 NM to RW13	* LNAV only.
4000 ← 312° → 132° → 732° → 2700 → *1640 → RW13					
8.6 NM      3.2 NM      1.9 NM					
CATEGORY	A	B	C	D	
LPV DA		1252-¾	250 (300-¾)		
LNAV/VNAV DA		1401-1	399 (400-1)		
LNAV MDA	1500-½	498 (500-½)	1500-¾ 498 (500-¾)	1500-1 498 (500-1)	
CIRCLING	1500-1	498 (500-1)	1560-1½ 558 (600-1½)	1640-2 638 (700-2)	

SC-3, 25 FEB 2021 to 25 MAR 2021

SC-3, 25 FEB 2021 to 25 MAR 2021