


WAAS CH <b>86830</b> <b>W02B</b>	APP CRS <b>015°</b>	Rwy Idg TDZE <b>754</b> Apt Elev <b>759</b>	<b>7571</b>
--	------------------------	---	-------------

# RNAV (GPS) RWY 2L

DUPAGE (DPA)

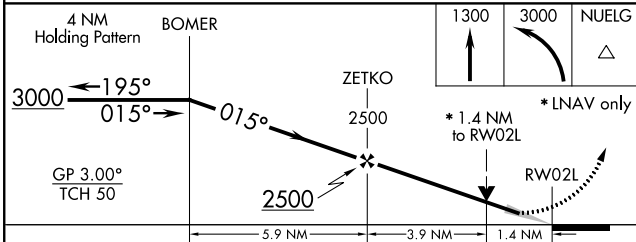
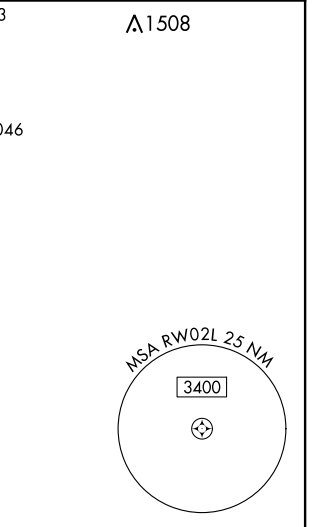
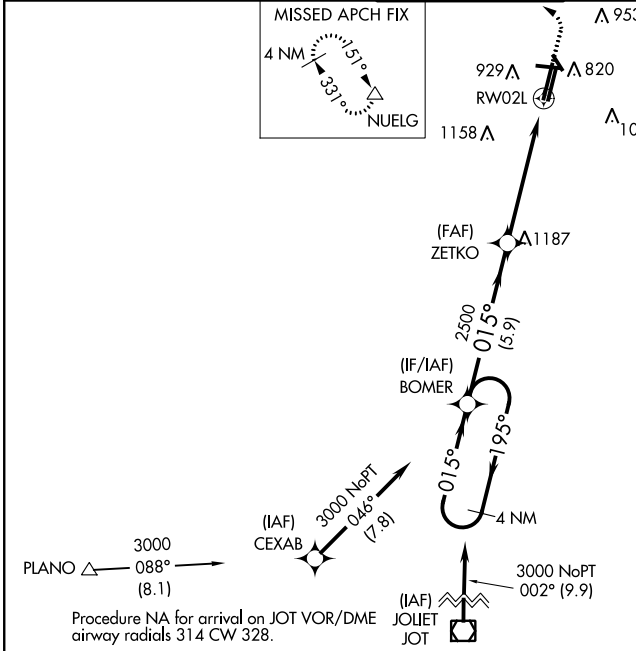
**⚠** For uncompensated Baro-VNAV systems, LNAV/VNAV NA below -16°C (4°F) or above 54°C (130°F). DME/DME RNP-0.3 NA. When local altimeter setting not received, use Aurora altimeter setting and increase all DA 37 feet and all MDA 40 feet; increase LNAV/VNAV all Cats and LNAV Cat C/D visibility 1/8 mile. For inop MALS, increase LNAV/VNAV all Cats visibility to 1 1/8 and LNAV Cat C/D visibility to 1 3/8 mile. For inop MALS when using Aurora altimeter setting, increase LNAV/VNAV all Cats visibility to 1 1/8 and LNAV Cat C/D visibility to 1 3/8 mile. VDP and Baro-VNAV NA when using Aurora altimeter setting. Circling Rwy 15, 28, 33 NA at night.

**MALS**



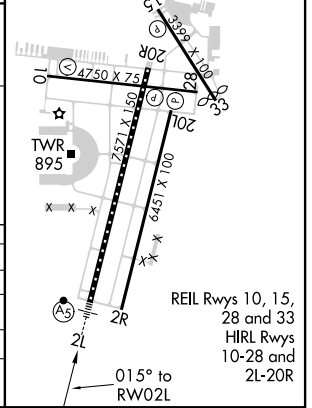
**MISSED APPROACH:**  
Climb to 1300 then climbing left turn to 3000 direct NUELG and hold.

ATIS <b>132.075</b>	CHICAGO APP CON <b>133.5 349.0</b>	DUPAGE TOWER <b>120.9 257.8</b>	GND CON <b>121.8</b>	CLNC DEL <b>119.75</b>
------------------------	---------------------------------------	------------------------------------	-------------------------	---------------------------



ELEV 759	TDZE 754
----------	----------

MIRL Rwy 15-33 and 2R-20L  
TDZ/CL Rwy 2L  
RLS Rwy 10



CATEGORY	A	B	C	D
LPV DA		954-1/2	200 (200-1/2)	
LNAV/VNAV DA		1114-3/4	360 (400-3/4)	
LNAV MDA	1260-1/2	506 (600-1/2)	1260-1	506 (600-1)
CIRCLING	1260-1	501 (600-1)	1360-1 3/4	1360-2
			601 (700-1 3/4)	601 (700-2)

EC-3, 25 FEB 2021 to 25 MAR 2021

EC-3, 25 FEB 2021 to 25 MAR 2021