

LOC I-DPA 109.5	APP CRS 097°	Rwy Idg 4750
		TDZE 756
		Apt Elev 759

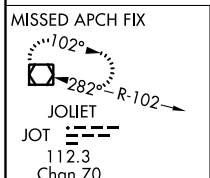
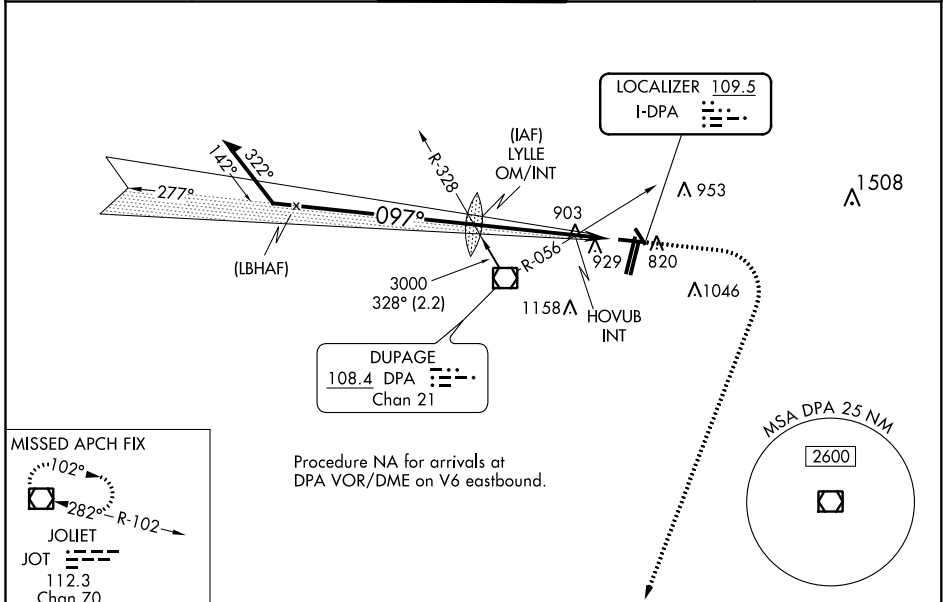
ILS or LOC RWY 10

DUPAGE (DPA)

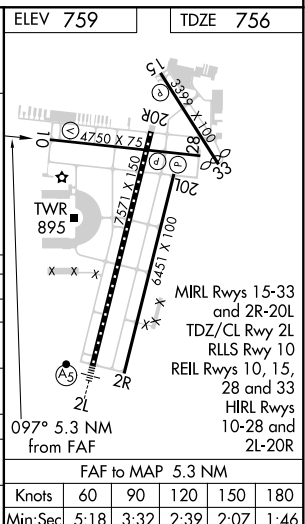
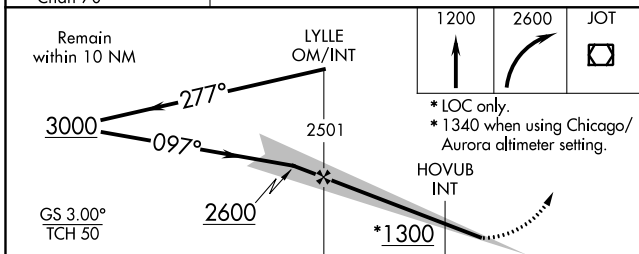
⚠ When local altimeter setting not received, use Chicago/Aurora altimeter setting and increase all DA 37 feet and all MDA 40 feet, and increase S-LOC 10 Cats C and D and HOVUB INT minimums S-LOC 10 Cats C and D visibility 1/2 mile. Circling Rwy 15, 28, 33 NA at night.

MISSED APPROACH: Climb to 1200 then climbing right turn to 2600 direct JOT VOR/DME and hold.

ATIS 132.075	CHICAGO APP CON 133.5 349.0	DUPAGE TOWER 120.9 257.8	GND CON 121.8	CLNC DEL 119.75
------------------------	---------------------------------------	------------------------------------	-------------------------	---------------------------



Procedure NA for arrivals at DPA VOR/DME on V6 eastbound.



CATEGORY	A	B	C	D
S-ILS 10		956-3/4	200 (200-3/4)	
S-LOC 10	1300-1	544 (600-1)	1300-1 1/2	544 (600-1 1/2)
CIRCLING	1300-1	541 (600-1)	1360-1 3/4	1360-2 601 (700-2)
HOVUB INT MINIMUMS (DUAL VOR RECEIVERS REQUIRED)				
S-LOC 10	1220-1	464 (500-1)	1220-1 3/8	464 (500-1 3/8)
CIRCLING	1260-1	501 (600-1)	1360-1 3/4	1360-2 601 (700-2)

Knots	60	90	120	150	180
Min:Sec	5:18	3:32	2:39	2:07	1:46

EC-3, 25 FEB 2021 to 25 MAR 2021

EC-3, 25 FEB 2021 to 25 MAR 2021