

DOVER, DELAWARE

# TACAN RWY 1

TACAN DOV Chan 37	APCH CRS 008°	Rwy ldg TDZE Arprt Elev	9602 25 29
----------------------	------------------	-------------------------------	------------------

AL-562 (USAF)

DOVER AFB (KDOV)

**V** \* When ALS inop, increase CAT AB to 55, vis to 1 mile, CAT CDE vis to 1 3/8 miles.

ALSF-2

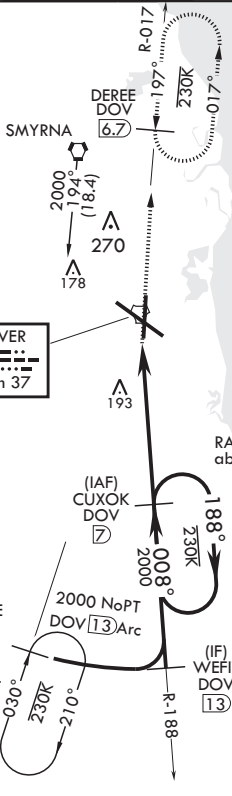
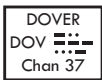


MISSED APPROACH: Climb to 2000 via DOV TACAN R-017 to DERE/DOV 6.7 DME and hold.

ATIS 127.825 273.5	APP CON 132.425 257.875	TOWER 126.35 279.625	GND CON 118.875 225.4	CLNC DEL 125.55 289.4
-----------------------	----------------------------	-------------------------	--------------------------	--------------------------

CAUTION: When Rwy 14 VGSI inop, circling to Rwy 14 NA at night.

115

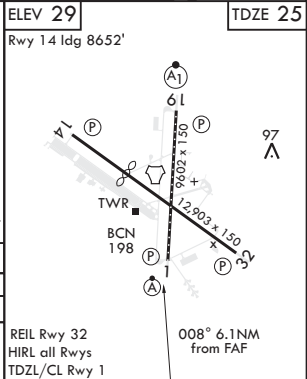
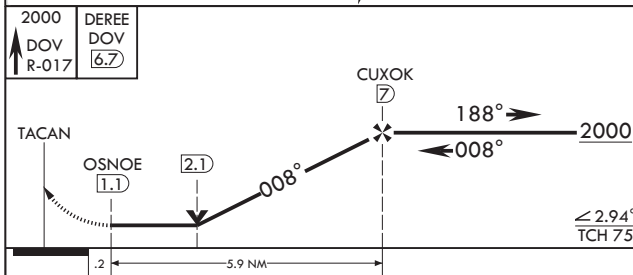


RADAR required for holding above 4000 or > 230 KIAS

RADAR required for holding above 4000 or > 230 KIAS

RADAR required for holding above 4000 or > 230 KIAS

EMERG SAFE ALT 100 NM 4300



CATEGORY	A	B	C	D	E
S-1*	480/24	455 (500-1/2)	480/45	455	(500-7/8)
<b>C</b> CIRCLING	500-1 471 (500-1)	540-1 511 (600-1)	580-1 1/2 551 (600-1 1/2)	620-2 591 (600-2)	1080-3 1051 (1100-3)

ELEV 29  
Rwy 14 ldg 8652'  
TDZE 25  
REIL Rwy 32  
HIRL all Rwys  
TDZL/CL Rwy 1  
008° 6.1NM from FAF

DOVER, DELAWARE  
Amdt 2 05DEC19

39°08'N - 75°28'W

DOVER AFB (KDOV)

# TACAN RWY 1

NE-3, 25 FEB 2021 to 25 MAR 2021

NE-3, 25 FEB 2021 to 25 MAR 2021