

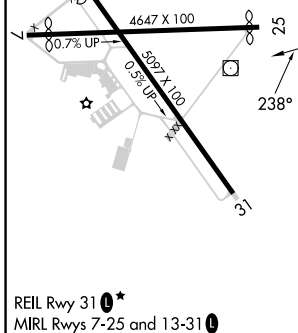
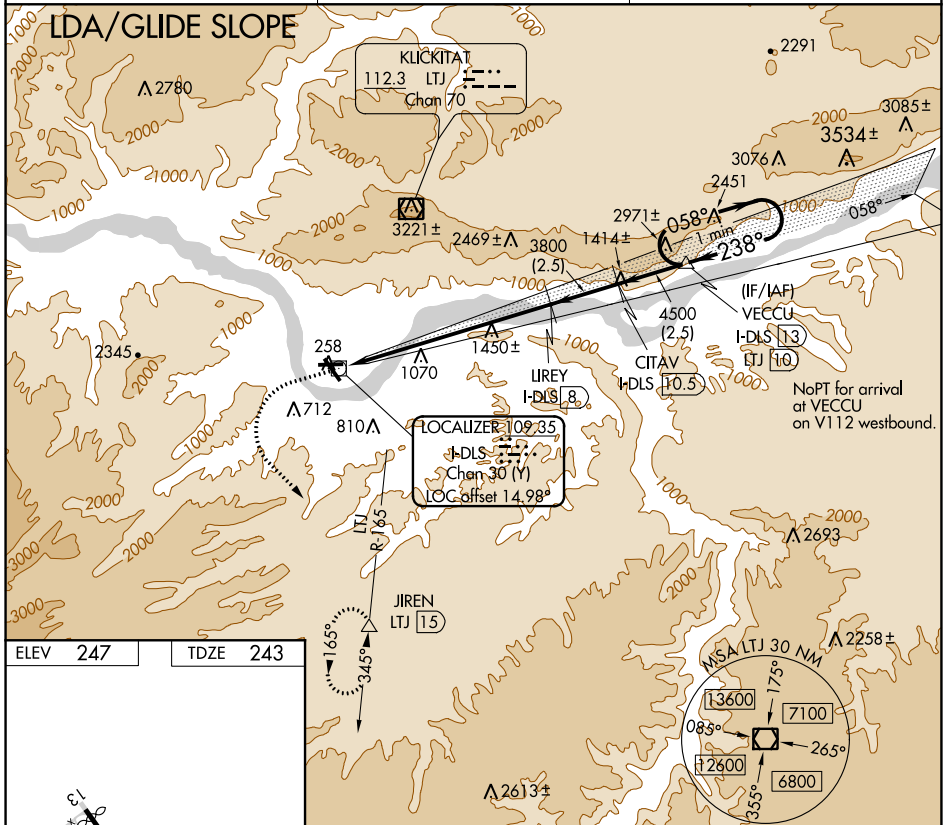
LOC/DME I-DLS 109.35 Chan 30 (Y)	APP CRS 238°	Rwy Idg TDZE 4451 243	Apt Elev 247
---	------------------------	---	------------------------

LDA/DME RWY 25

COLUMBIA GORGE RGNL/THE DALLES MUNI(DLS)

<p>When local altimeter setting not received, procedure NA. Glide slope provided by standard glide slope equipment.</p>	<p>MISSED APPROACH: Climb to 1600 then climbing left turn to 7000 on heading 120° and LTJ VOR/DME R-165 to JIREN/LTJ 15 DME and hold, continue climb-in-hold to 7000.</p>	
	ASOS 135.175	SEATTLE CENTER 119.65 257.6

UNICOM 123.0 (CTAF) 0



ELEV 247	TDZE 243	<p>1600 7000</p> <p>↑ hdg 120°</p>		<p>JIREN △</p> <p>Use I-DLS DME when on the localizer course.</p>
<p>REIL Rwy 31 0*</p> <p>MIRL Rwy 7-25 and 13-31 0</p>		<p>IREY I-DLS 8</p> <p>CITAV I-DLS 10.5</p>	<p>VECCU I-DLS 13</p> <p>One Minute Holding Pattern</p>	<p>5300</p> <p>GS 4.20°</p> <p>TCH 43</p>
<p>7.9 NM 2.5 NM 2.5 NM</p>		<p>5300</p> <p>← 238° → 058°</p>		
<p>CATEGORY</p>	<p>A</p>	<p>B</p>	<p>C</p>	<p>D</p>
<p>S-LDA/GS 25</p>	<p>1368-3</p>	<p>1125 (1200-3)</p>	<p>NA</p>	

NW-1, 25 FEB 2021 to 25 MAR 2021

NW-1, 25 FEB 2021 to 25 MAR 2021