

TACAN LKI Chan 11	APCH CRS 087°	Rwy ldg 10,062 THRE 1428 Arprt Elev 1428
----------------------	------------------	--

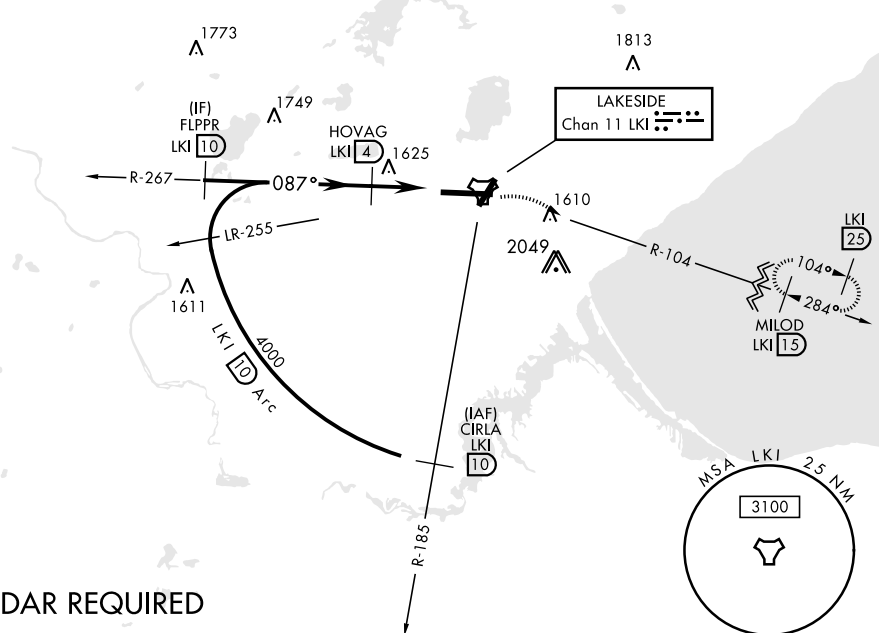
AL-125 [USAF]

DULUTH INTL (KDLH)

<p>⚠ *When ALS inop, increase CAT E vis to 1½ miles. ** Circling NA for CAT E SE of Rwy 3 and 27.</p>	<p>ALSF-2 A</p>	<p>MISSED APPROACH: Climb to 2500 then climbing right turn to 4000 via LKI R-104 to MILOD (15 DME) and hold.</p>
---	---------------------	--

<p>ATIS 124.1 270.1</p>	<p>DULUTH APP CON 125.45 233.7</p>	<p>DULUTH TOWER 118.3 257.8</p>	<p>GND CON 121.9 348.6</p>
------------------------------------	---	--	---------------------------------------

CAUTION:
Do not select channel 73 "DLH" for channel 11 "LKI".
Towers 2049' on R-099 channel 73 "DLH".



RADAR REQUIRED
EMERG SAFE ALT 100 NM 4100

<p>ELEV 1428 THRE 1428</p>	
<p>CIRLA R-185 4000</p> <p>FLPPR R-267 4000</p> <p>HOVAG 2300</p> <p>ARC 10 3.00° TCH 50</p> <p>IWYES 2</p> <p>TACAN 2.0 NM</p>	
<p>087° to TACAN</p> <p>1472, 1478, 1464, 1448, 1485, 1465</p> <p>TWR 1485</p> <p>Rwy 9 ldg 10,062'</p> <p>Rwy 27 ldg 10,062'</p>	
CATEGORY	A B C D E
S-9 *	1880/24 452 (500-½) 1880/45 452 (500-1)
CIRCLING **	1920-1 492 (500-1) 1920-1½ 492 (500-½) 1980-2 552 (600-2) 2060-2¼ 632 (700-2¼)
<p>TDZL/CL Rwy 9-27 REIL Rwy 3 and 21 HIRL Rwy 3-21 and 9-27</p>	

NC-1, 25 FEB 2021 to 25 MAR 2021

NC-1, 25 FEB 2021 to 25 MAR 2021