

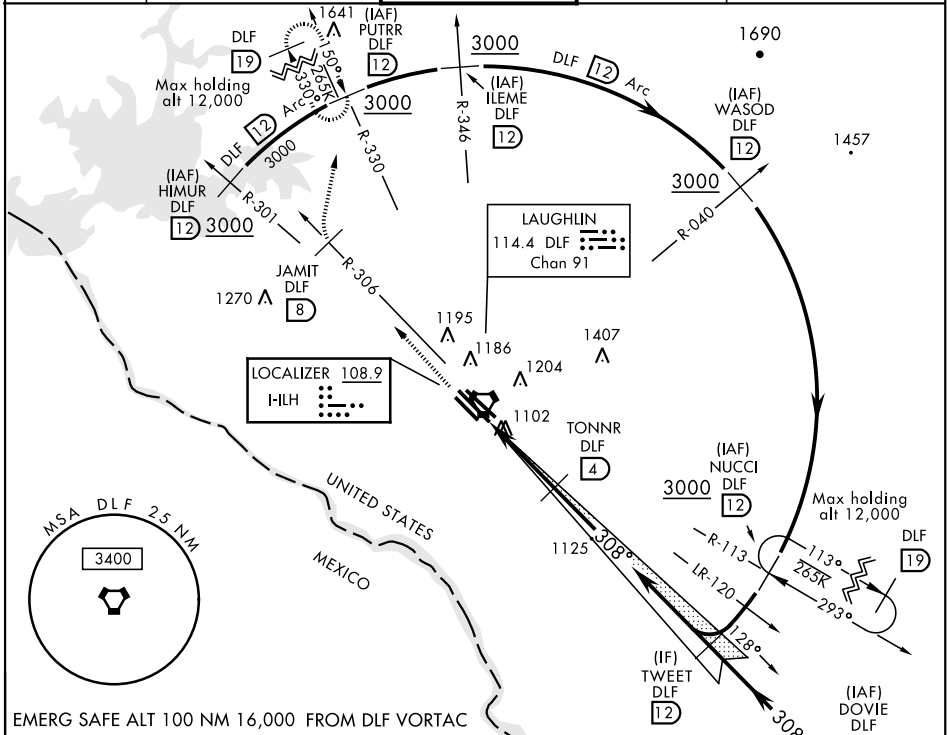
ILS or LOC/DME RWY 31C

LOC I-ILH 108.9	APCH CRS 308°	Rwy Idg 31C 8852 31R 8315 TDZE 31C 1078 31R 1077 Arprt Elev 1081
---------------------------	-------------------------	---

AL-111 [USAF] LAUGHLIN AFB (KDLF)

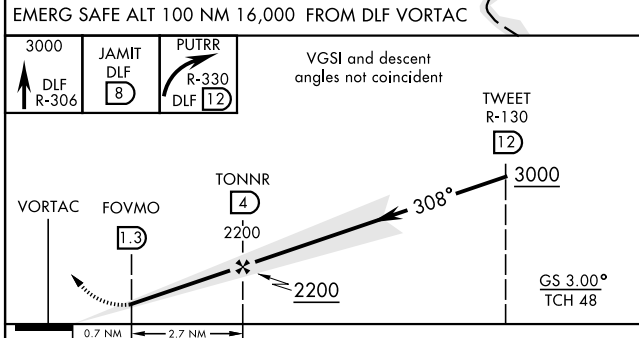
* Circling W of Rwy 13R-31L not authorized. MISSED APPROACH: Climb to 3000 on DLF VORTAC R-306 to 8 DME (JAMIT), then turn right to intercept DLF R-330 to 12 DME (PUTRR) and hold.

ATIS ★ 114.4 269.9	DEL RIO APP CON 119.6 259.1	LAUGHLIN TOWER ★ 125.2 307.375	GND CON 275.8	CLNC DEL 120.5 335.8
------------------------------	---------------------------------------	--	-------------------------	--------------------------------

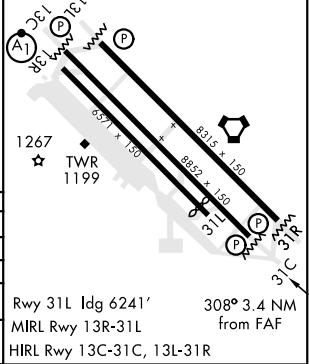


SC-3, 25 FEB 2021 to 25 MAR 2021

SC-3, 25 FEB 2021 to 25 MAR 2021



ELEV 1081	TDZE 31C 1078
	TDZE 31R 1077



CATEGORY	A	B	C	D	E
S-ILS 31C	1328-7/8		250	(300-7/8)	
S-LOC 31C	1380-1	302 (300-1)	1380-7/8		302 (300-7/8)
SIDESTEP 31R	1380-1	303 (300-1)	1380-7/8		303 (300-7/8)
CIRCLING*	1500-1 419 (500-1)	1540-1 459 (500-1)	1700-1 3/4 619 (700-1 3/4)	1700-2 619 (700-2)	1720-2 1/4 639 (700-2 1/4)

DEL RIO, TEXAS
Amdt 4 17AUG17

29°22'N-100°47'W

LAUGHLIN AFB (KDLF)

ILS or LOC/DME RWY 31C