

DEL RIO, TEXAS

ILS or LOC/DME RWY 13C

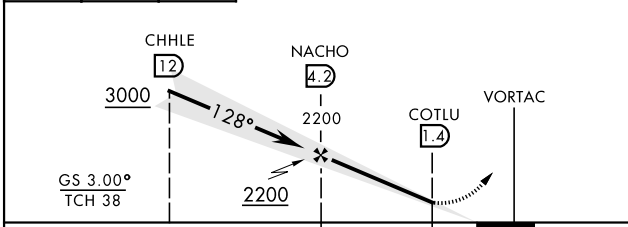
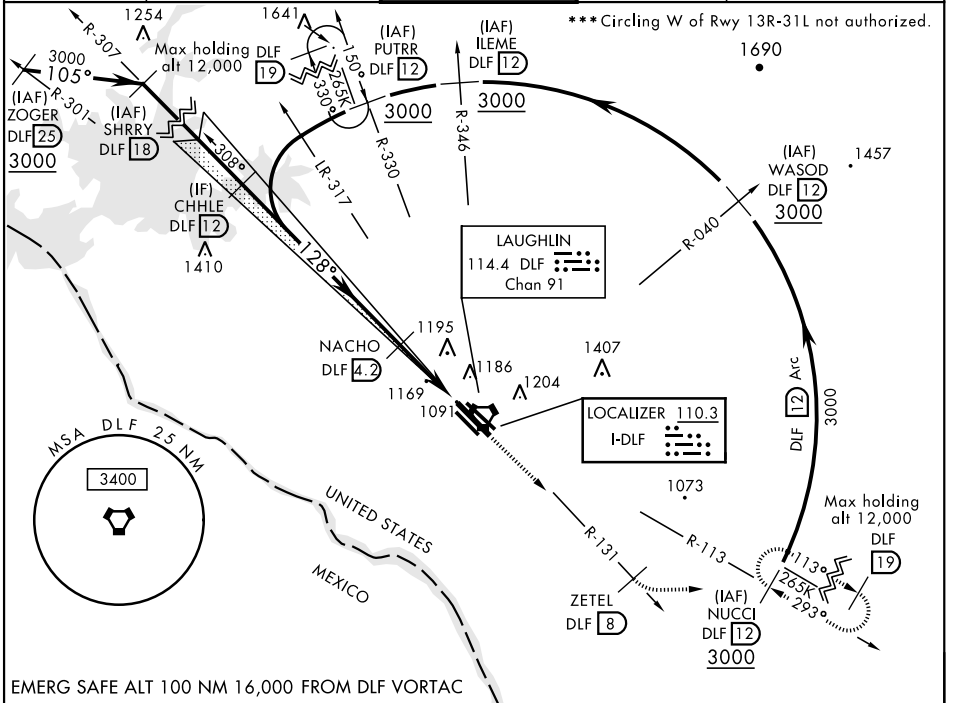
LOC I-DLF 110.3	APCH CRS 128°	Rwy Idg 13C 8852 13L 8315 TDZE 13C 1081 13L 1078 Arprt Elev 1081
---------------------------	-------------------------	---

AL-111 [USAF] LAUGHLIN AFB (KDLF)

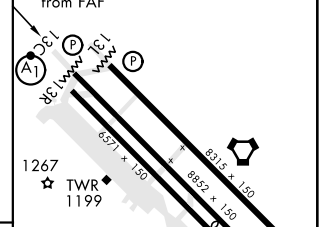
▼ * When ALS inop, increase RVR to 40 and vis to 3/4 mile.
 ** When ALS inop, increase CAT AB RVR to 55 and vis to 1 mile, CAT CDE RVR to 50 and vis to 1 mile.

ⓐ1 MISSED APPROACH: Climb to 3000 on DLF VORTAC R-131 to 8 DME (ZETEL), then turn left to intercept DLF R-113 to 12 DME (NUCCI) and hold.

ATIS ★ 114.4 269.9	DEL RIO APP CON 119.6 259.1	LAUGHLIN TOWER ★ 125.2 307.375	GND CON 275.8	CLNC DEL 120.5 335.8
------------------------------	---------------------------------------	--	-------------------------	--------------------------------



ELEV 1081	TDZE 13C 1081
	TDZE 13L 1078



CATEGORY	A	B	C	D	E
S-ILS 13C*	1281/24		200	(200-1/2)	
S-LOC 13C**	1420/24	339 (400-1/2)	1420/26	339	(400-1/2)
SIDESTEP 13L	1440-1		362	(400-1)	
CIRCLING***	1500-1	1540-1	1700-1 3/4	1700-2	1720-2 1/4
	419 (500-1)	459 (500-1)	619 (700-1 3/4)	619 (700-2)	639 (700-2 1/4)

Runway 31L Idg 6241'
 MRL Rwy 13R-31L
 HRL Rwy 13C-31C, 13L-31R

DEL RIO, TEXAS
Amdt 4 19JUL18

29°22'N-100°47'W

LAUGHLIN AFB (KDLF)

ILS or LOC/DME RWY 13C

SC-3, 25 FEB 2021 to 25 MAR 2021

SC-3, 25 FEB 2021 to 25 MAR 2021