

WAAS CH <b>61339</b> <b>W36A</b>	APP CRS <b>003°</b>	Rwy Idg TDZE Apt Elev	<b>5000</b> <b>379</b> <b>401</b>
--	------------------------	-----------------------------	---

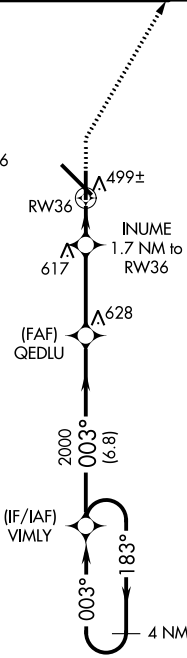
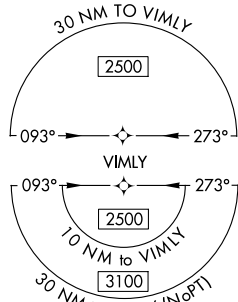
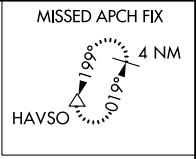
# RNAV (GPS) RWY 36

DOTHAN RGNL (DHN)

**▼** For uncompensated Baro-VNAV systems, LNAV/VNAV NA below -5°C (23°F) or above 54°C (130°F). DME/DME RNP-0.3 NA. Rwy 36 helicopter visibility reduction below ¼ SM NA.

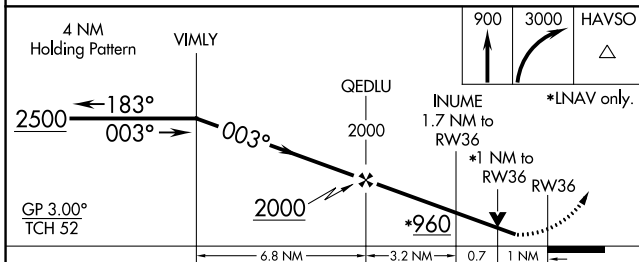
MISSED APPROACH: Climb to 900 then climbing right turn to 3000 direct HAVSO and hold.

ATIS <b>135.725</b>	CAIRNS APP CON* <b>125.4 327.125</b>	<b>DOTHAN TOWER*</b> <b>118.4 (CTAF) 0 257.6</b>	GND CON <b>121.7 348.6</b>	UNICOM <b>122.95</b>
------------------------	---	---	-------------------------------	-------------------------



SE-4, 25 FEB 2021 to 25 MAR 2021

SE-4, 25 FEB 2021 to 25 MAR 2021



CATEGORY	A	B	C	D
LPV DA		651-7/8	272 (300-7/8)	
LNAV/VNAV DA		681-1	302 (300-1)	
LNAV MDA	760-1	381 (400-1)	760-1 1/8	381 (400-1 1/8)
<b>C</b> CIRCLING	860-1	459 (500-1)	920-1 1/2 519 (600-1 1/2)	1040-2 639 (700-2)

