

WAAS CH 86504 W14A	APP CRS 138°	Rwy Idg 8496 TDZE 401 Apt Elev 401
--	------------------------	---

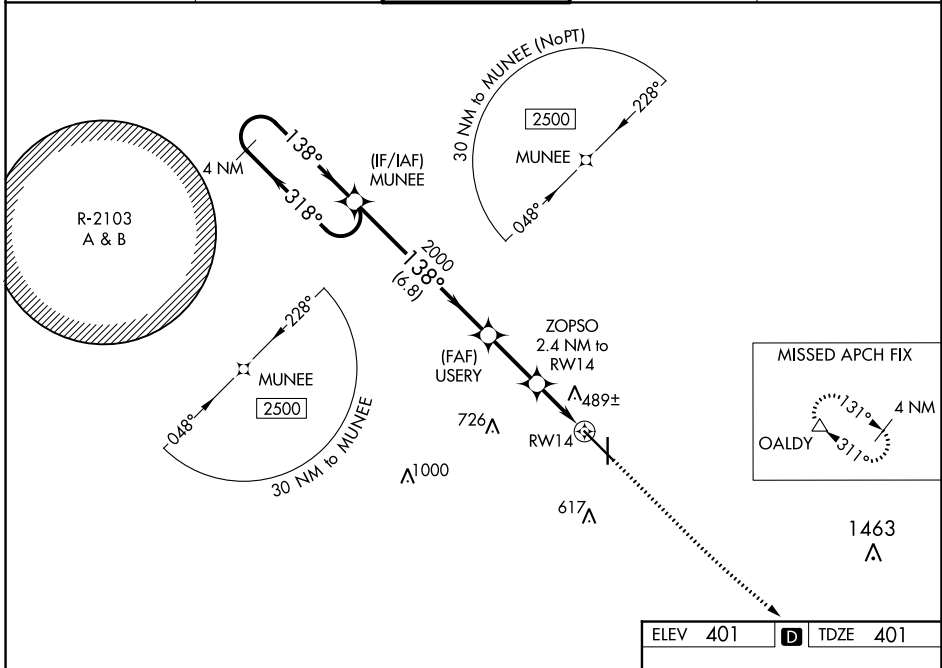
RNAV (GPS) RWY 14

DOTHAN RGNL (DHN)

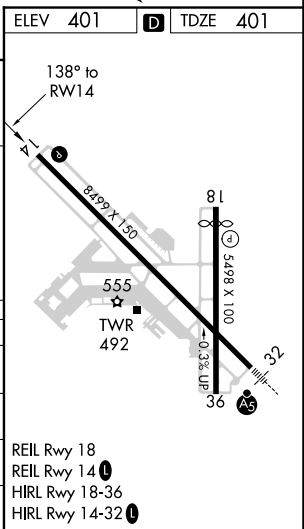
▽ For uncompensated Baro-VNAV systems, LNAV/VNAV NA below -15°C (5°F) or above 41°C (105°F). DME/DME RNP-0.3 NA. Intense student helicopter pilot training in/ov airport.

MISSED APPROACH: Climb to 900 then climbing left turn to 3000 direct OALDY and hold.

ATIS 135.725	CAIRNS APP CON * 125.4 327.125	DOTHAN TOWER * 118.4 (CTAF) 0 257.6	GND CON 121.7 348.6	UNICOM 122.95
------------------------	--	---	-------------------------------	-------------------------



4 NM Holding Pattern		VGSIs and RNAV glidepath not coincident (VGSi Angle 3.00/TCH 40).		900	3000	OALDY
MUNEE		USERY		*LNAV only.		
2500 ← 318°		2000		ZOPSO 2.4 NM to RWY 14		
138° →		*1200		*0.9 NM to RWY 14		
GP 3.00° TCH 54		2000		RWY 14		
		6.8 NM		2.5 NM		1.5 NM
						0.9
CATEGORY	A	B	C	D		
LPV DA	601-¾		200 (200-¾)			
LNAV/VNAV DA	724-1		323 (400-1)			
LNAV MDA	820-1 419 (500-1)		820-1½ 419 (500-1½)			
C CIRCLING	860-1 459 (500-1)		920-1½ 519 (600-1½)		1040-2 639 (700-2)	



SE-4, 25 FEB 2021 to 25 MAR 2021

SE-4, 25 FEB 2021 to 25 MAR 2021