

WAAS CH 61018 W29A	APP CRS 287°	Rwy Idg TDZE Apt Elev	6534 4933 4933
--	------------------------	-----------------------------	---

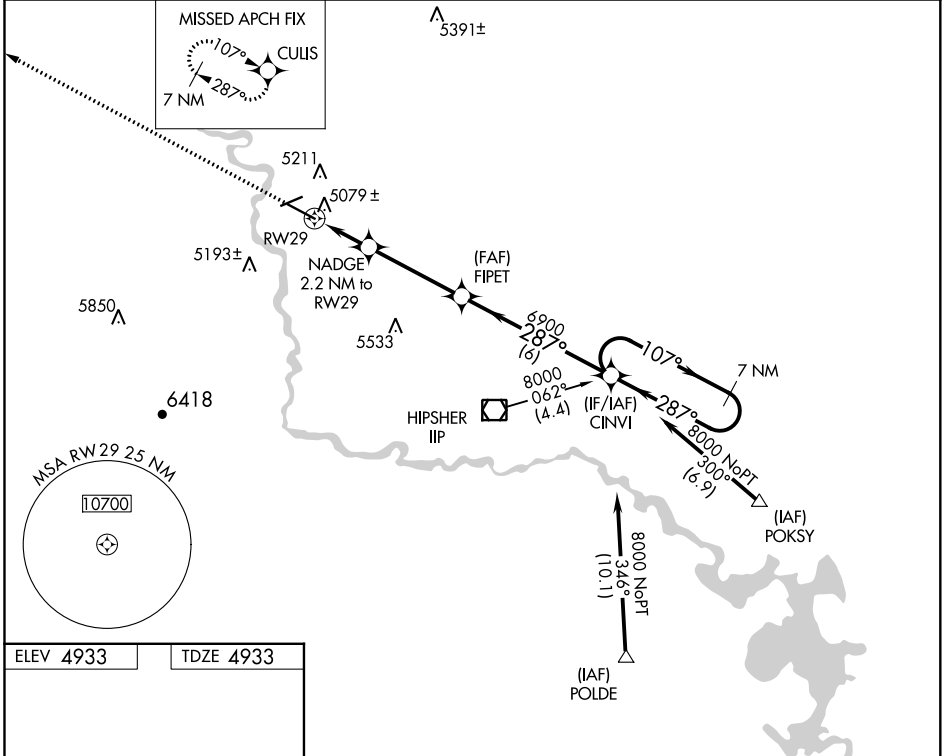
RNAV (GPS) RWY 29

CONVERSE COUNTY (DGW)

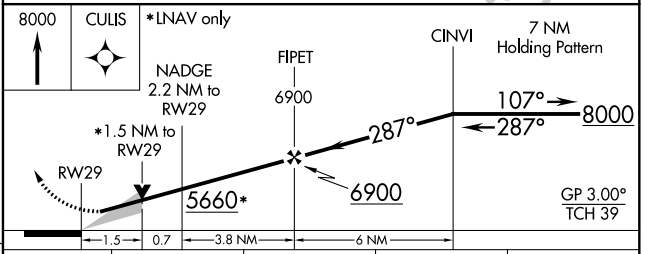
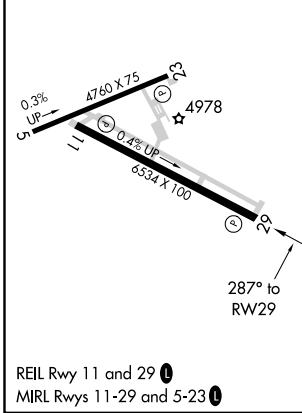
For uncompensated Baro-VNAV systems, LNAV/VNAV NA below -24°C (-1.1°F) or above 39°C (102°F).
DME/DME RNP-0.3 NA.

MISSED APPROACH: Climb to 8000 direct CULIS and hold.

ASOS 135.225	DENVER CENTER 135.6 363.025	UNICOM 122.8 (CTAF) 0
------------------------	---------------------------------------	---------------------------------



ELEV 4933	TDZE 4933
-----------	-----------



CATEGORY	A	B	C	D
LPV DA	5133-3/4 200 (200-3/4)			
LNAV/VNAV DA	5369-1 1/2 436 (500-1 1/2)			
LNAV MDA	5440-1	507 (600-1)	5440-1 1/2	507 (600-1 1/2)
CIRCLING	5520-1	587 (600-1)	5520-1 1/2	5560-2 627 (700-2)

NW-1, 25 FEB 2021 to 25 MAR 2021

NW-1, 25 FEB 2021 to 25 MAR 2021