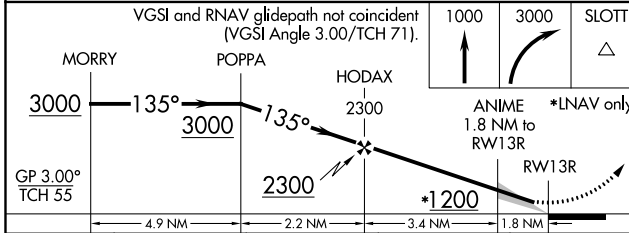
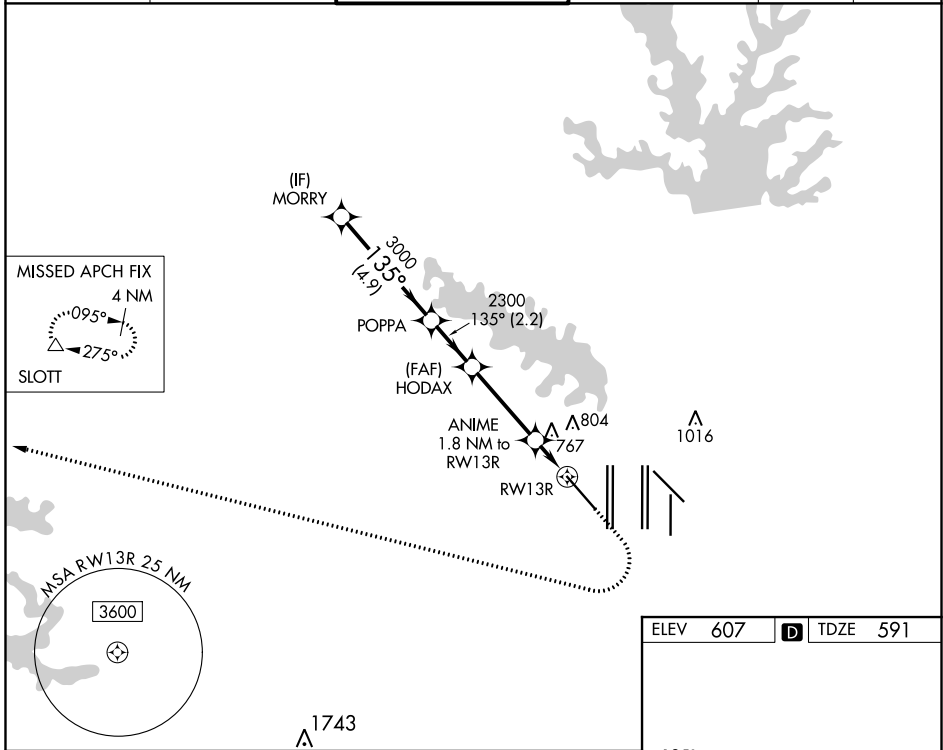


|  |                        |   |
|--|------------------------|---|
| WAAS<br>CH <b>72742</b><br><b>W13A</b> | APP CRS<br><b>135°</b> | Rwy Idg <b>9300</b><br>TDZE <b>591</b><br>Apt Elev <b>607</b> |
|--|------------------------|---|

# RNAV (GPS) Y RWY 13R

DALLAS-FORT WORTH INTL (DFW)

|  |   |   |  |                           |       |
|--|---|---|--|---------------------------|-------|
| RNP APCH.<br>▼ For uncompensated Baro-VNAV systems, LNAV/VNAV NA below -6° C or above 54° C. For inop ALS, increase LNAV/VNAV all Cats visibility to RVR 5500 and LNAV Cat C/D visibility to 1/8 SM. |   | MALS R<br>⊕   | MISSED APPROACH: Climb to 1000 then climbing right turn to 3000 direct SLOTT and hold. |                           |       |
| D-ATIS<br>ARR <b>123.775</b><br>DEP <b>135.925</b>   | REGIONAL APP CON<br><b>133.15 118.1</b> | DFW TOWER<br><b>126.55 127.5 EAST</b><br><b>124.15 134.9 WEST</b> | GND CON<br><b>121.65 121.8 EAST</b><br><b>121.85 WEST</b>                              | CLNC DEL<br><b>128.25</b> | CPDLC |



| CATEGORY     | A       | B             | C             | D           |
|--------------|---------|---------------|---------------|-------------|
| LPV DA       |         | 791/18        | 200 (200-1/2) |             |
| LNAV/VNAV DA |         | 967/35        | 376 (400-3/8) |             |
| LNAV MDA     | 1080/24 | 489 (500-1/2) | 1080/50       | 489 (500-1) |

ELEV 607 **D** TDZE 591

HIRL all Rwys  
REIL Rwys 13L and 31L  
TDZ/CL all Rwys except 13L and 31L

SC-2, 25 FEB 2021 to 25 MAR 2021

SC-2, 25 FEB 2021 to 25 MAR 2021