

# DDRTH ONE DEPARTURE (RNAV)

AL-9077 (FAA)

DENVER INTL (DEN)  
DENVER, COLORADO

**TOP ALTITUDE:  
FL230**

D-ATIS DEP  
134.025  
CLNC DEL  
118.75  
CPDLC  
DENVER DEP CON  
127.05 363.25

### TAKEOFF MINIMUMS

Rwys 7, 26: NA-ATC.

Rwy 8: Standard with minimum climb of 410' per NM to 5934.

Rwys 16L/R, 17L/R: Standard.

Rwys 25, 34L/R, 35L/R: Standard with minimum climb of 400' per NM to 5934.

NOTE: DME/DME/IRU or GPS required.

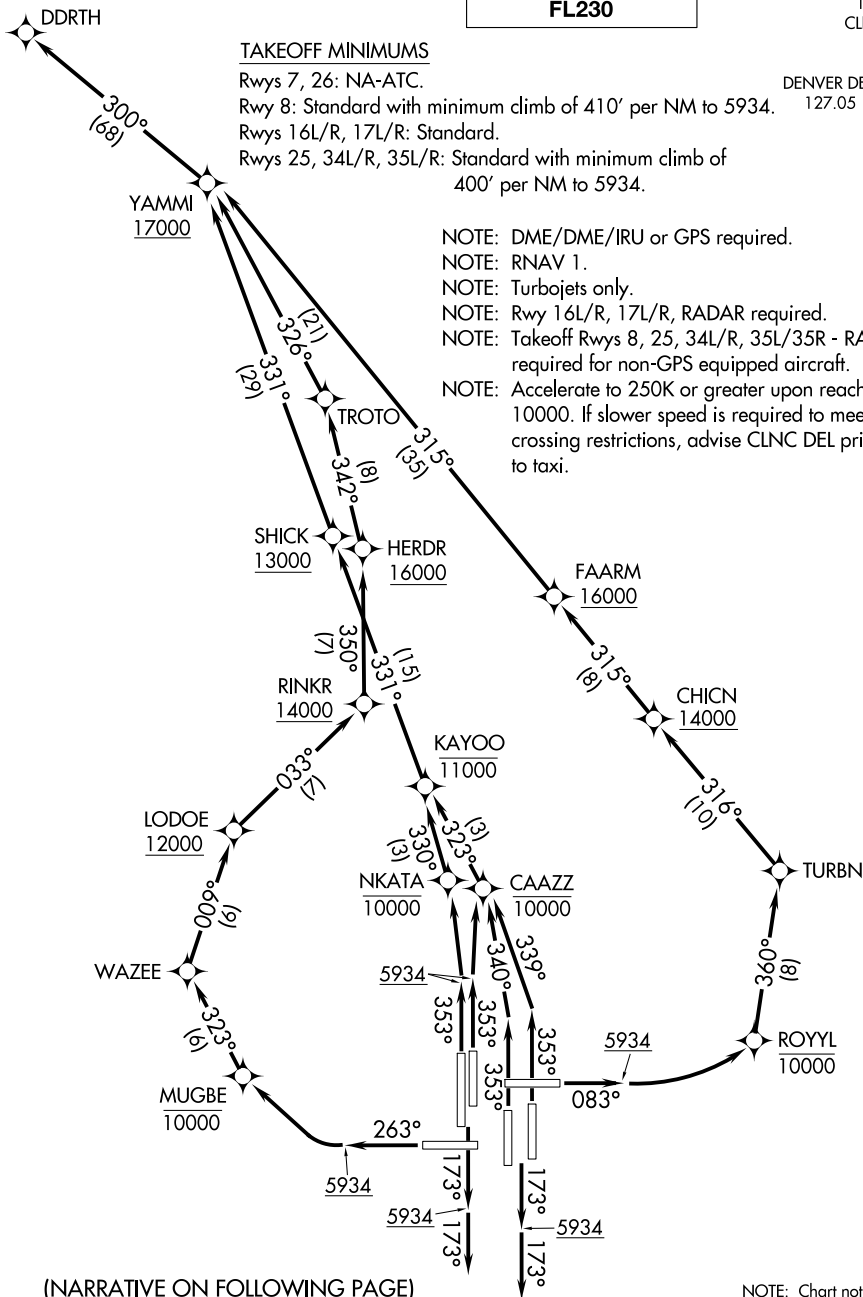
NOTE: RNAV 1.

NOTE: Turbojets only.

NOTE: Rwy 16L/R, 17L/R, RADAR required.

NOTE: Takeoff Rwys 8, 25, 34L/R, 35L/35R - RADAR required for non-GPS equipped aircraft.

NOTE: Accelerate to 250K or greater upon reaching 10000. If slower speed is required to meet crossing restrictions, advise CLNC DEL prior to taxi.



(NARRATIVE ON FOLLOWING PAGE)

NOTE: Chart not to scale.

# DDRTH ONE DEPARTURE (RNAV)

SW-1, 25 FEB 2021 to 25 MAR 2021

SW-1, 25 FEB 2021 to 25 MAR 2021