

LOC/DME I-DCU 110.55 Chan 42 (Y)	APP CRS 185°	Rwy Ldg TDZE Apt Elev	6107 592 592
---	------------------------	-----------------------------	---

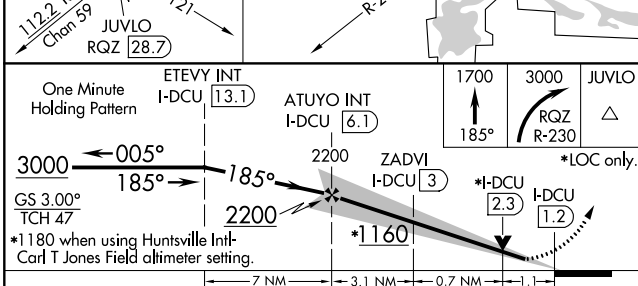
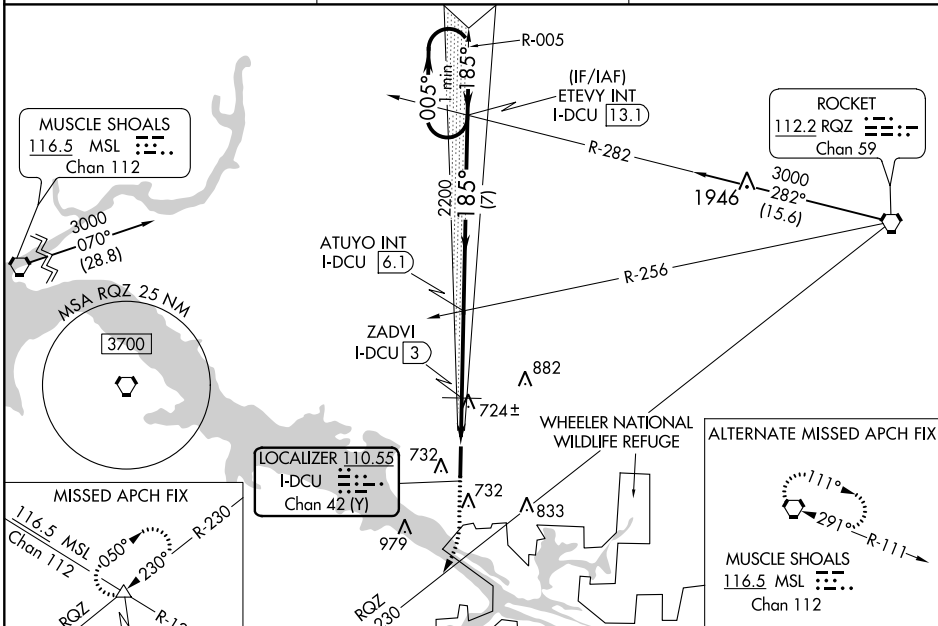
ILS Z or LOC Z RWY 18

PRYOR FIELD RGNL (DCU)

▽ When local altimeter setting not received, use Huntsville Intl-Carl T Jones Field altimeter setting: increase DA to 817 feet; increase all MDA 40 feet and all S-LOC 18 visibility Cats C and D ½ mile. VDP NA with Huntsville Intl-Carl T Jones Field altimeter setting.

▲ MISSED APPROACH: Climb to 1700 on 185° then climbing right turn to 3000 on RQZ VORTAC R-230 to JUVLO INT/RQZ 28.7 DME and hold.

ASOS 118.375	HUNTSVILLE APP CON* 118.05 239.0	UNICOM 123.075 (CTAF)
------------------------	--	---------------------------------



ELEV 592	TDZE 592
185° 4.9 NM from FAF	81
HIRL Rwy 18-36	
REIL Rwys 18 and 36	
FAF to MAP 4.9 NM	
Knots	60 90 120 150 180
Min:Sec	4:54 3:16 2:27 1:58 1:38

CATEGORY	A	B	C	D
S-ILS 18		792-¾	200 (200-¾)	
S-LOC 18	1160-1	568 (600-1)	1160-1½	568 (600-1½)
C CIRCLING	1160-1	568 (600-1)	1340-2¼ 748 (800-2¼)	1340-2½ 748 (800-2½)
ZADVI FIX MINIMUMS				
S-LOC 18	980-1	388 (400-1)	980-1½	388 (400-1½)
C CIRCLING	1040-1 448 (500-1)	1060-1 468 (500-1)	1340-2¼ 748 (800-2¼)	1340-2½ 748 (800-2½)

SE-4, 25 FEB 2021 to 25 MAR 2021

SE-4, 25 FEB 2021 to 25 MAR 2021