

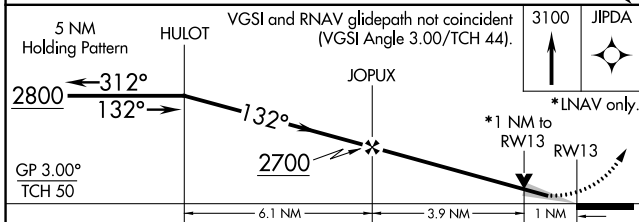
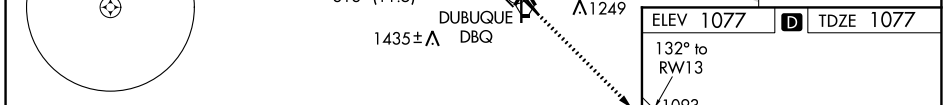
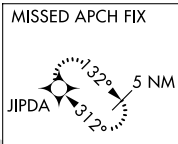
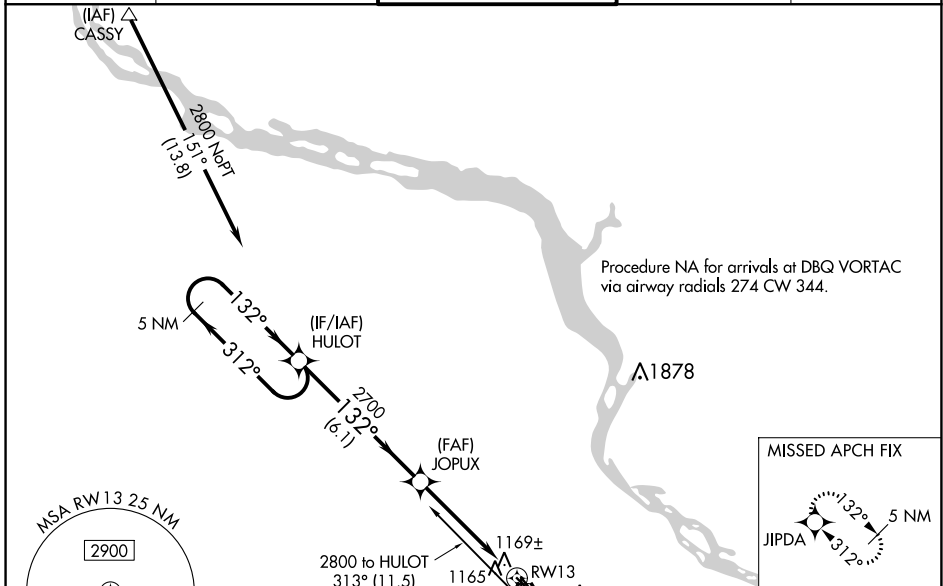
WAAS CH <b>93700</b> <b>W13A</b>	APP CRS <b>132°</b>	Rwy Idg TDZE Apt Elev	<b>6502</b> <b>1077</b> <b>1077</b>
--	------------------------	-----------------------------	---

# RNAV (GPS) RWY 13

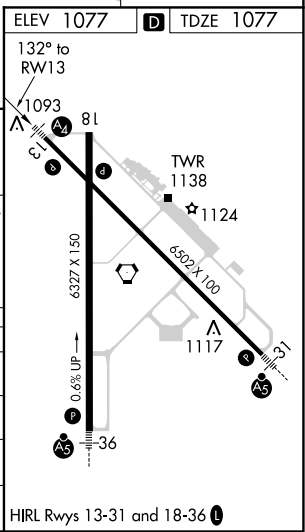
DUBUQUE RGNL (DBQ)

RNP APCH.		MALSP 	MISSED APPROACH: Climb to 3100 direct JIPDA and hold.
-34°C/-29°F	Inop table does not apply to LPV and LNAV/VNAV. Baro-VNAV NA when using Monticello altimeter setting. For uncompensated Baro-VNAV systems, LNAV/VNAV NA below -17°C or above 46°C. VDP NA when using Monticello altimeter setting. If local altimeter setting not received, use Monticello altimeter setting and increase all DAs/MDAs 100 feet.		

ATIS <b>127.25</b>	CHICAGO CENTER <b>133.95 281.4</b>	DUBUQUE TOWER ★ <b>119.5 (CTAF) 254.4</b>	GND CON <b>121.8</b>	UNICOM <b>122.95</b>
-----------------------	---------------------------------------	--	-------------------------	-------------------------



CATEGORY	A	B	C	D
LPV DA	1393-1 316 (400-1)			
LNAV/VNAV DA	1574-1¾ 497 (500-1¾)			
LNAV MDA	1440-¾ 363 (400-¾)		1440-1¼ 363 (400-1¼)	
CIRCLING	1580-1¾ 503 (600-1¾)		1600-1¾ 523 (600-1¾) 1800-2¼ 723 (800-2¼)	



NC-3, 25 FEB 2021 to 25 MAR 2021

NC-3, 25 FEB 2021 to 25 MAR 2021