

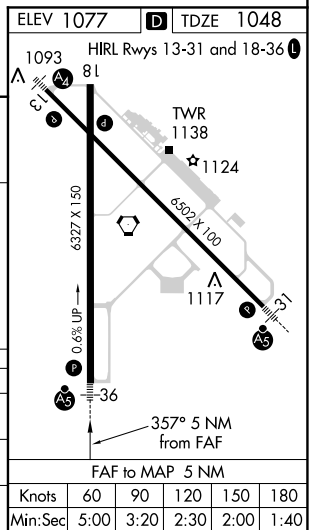
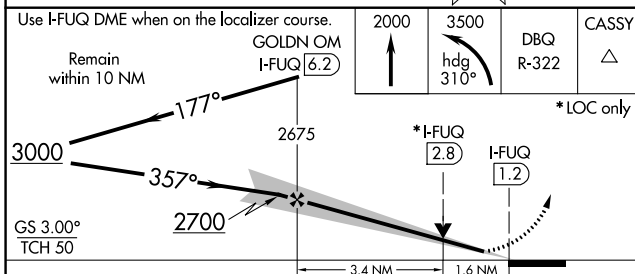
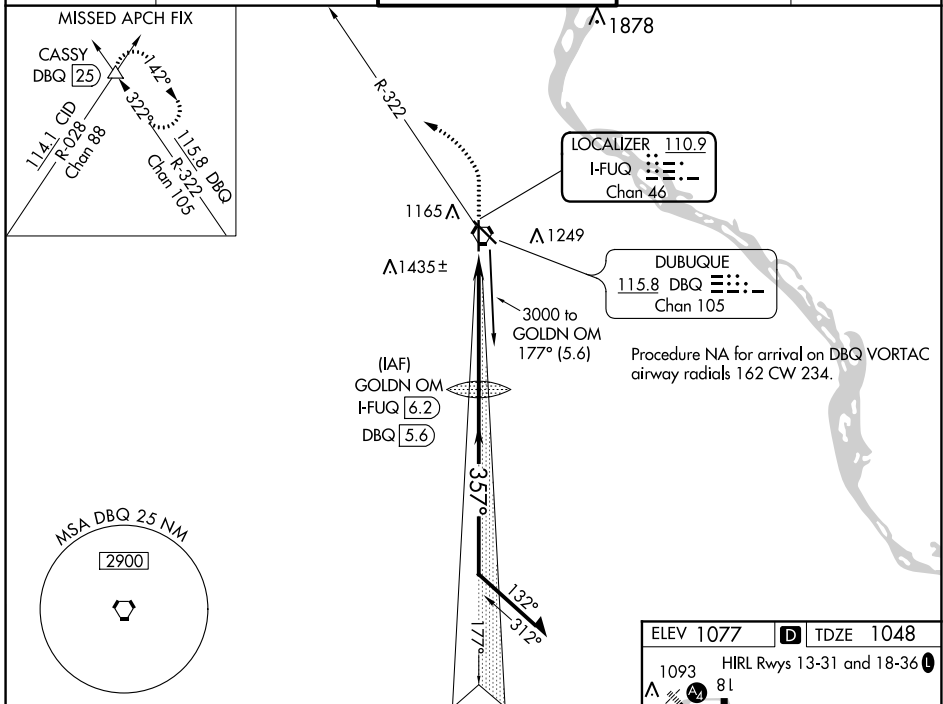
LOC/DME I-FUQ 110.9 Chan 46	APP CRS 357°	Rwy Idg 6327 TDZE 1048 Apt Elev 1077
---	------------------------	---

ILS or LOC RWY 36

DUBUQUE RGNL (DBQ)

DME or RADAR required for procedure entry.		MALSR	MISSED APPROACH: Climb to 2000 then climbing left turn to 3500 on heading 310° and DBQ R-322 to CASSY INT/DBQ 25 DME and hold.
# RVR 1800 authorized with use of FD or AP or HUD to DA. -34°C/-29°F			

ATIS 127.25	CHICAGO CENTER 133.95 281.4	DUBUQUE TOWER* 119.5 (CTAF) 0 254.4	GND CON 121.8	UNICOM 122.95
-----------------------	---------------------------------------	---	-------------------------	-------------------------



CATEGORY	A	B	C	D
S-ILS 36#	1248/24 200 (200-½)			
S-LOC 36	1580/24	532 (600-½)	1580/55	532 (600-1)
CIRCLING	1580-1 503 (600-1)	1600-1 523 (600-1)	1600-1½ 523 (600-½)	1800-2¼ 723 (800-2¼)

NC-3, 25 FEB 2021 to 25 MAR 2021

NC-3, 25 FEB 2021 to 25 MAR 2021