


| | | |
|---|------------------------|---|
| LOC/DME I-DBN 109.1 Chan 28 | APP CRS 020° | Rwy ldg 6300 TDZE 299 Apt Elev 311 |
|---|------------------------|---|

ILS or LOC RWY 2

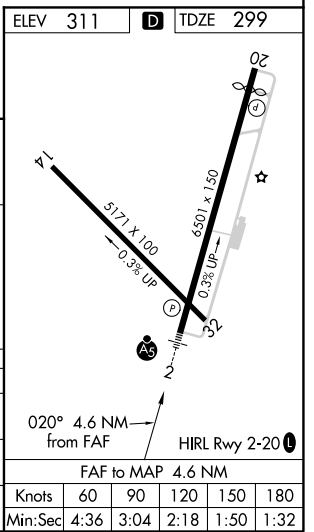
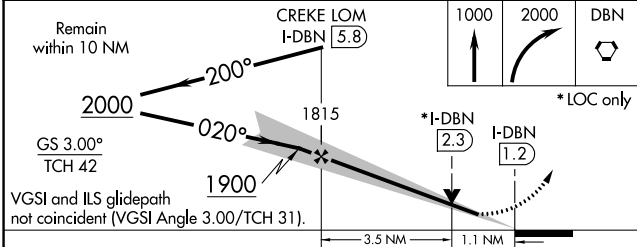
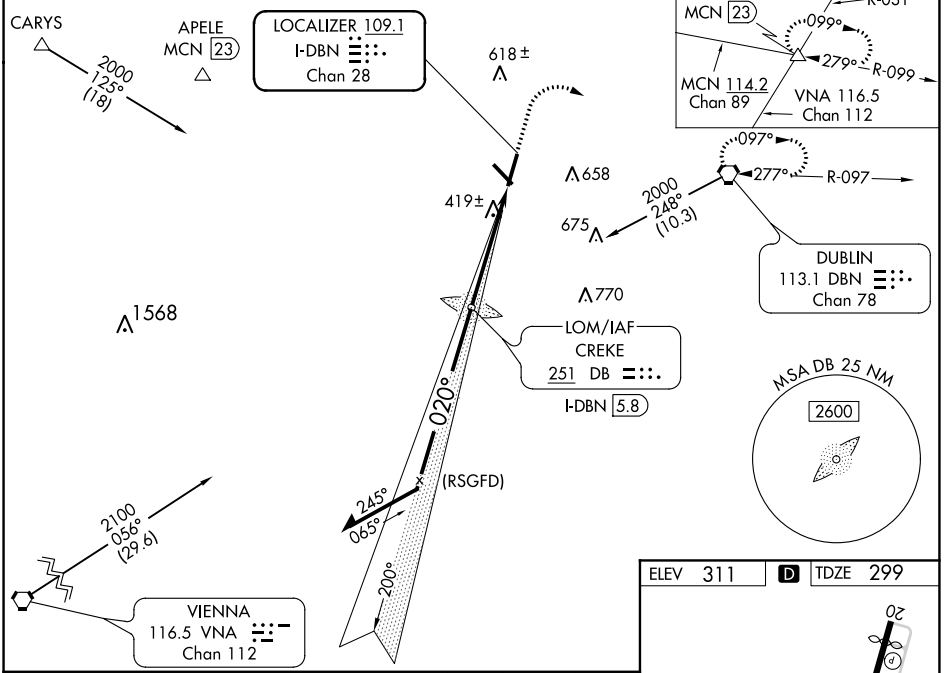
W H 'BUD' BARRON (DBN)

NA When local altimeter setting not received, use Vidalia altimeter setting: increase all DA to 592; increase all MDAs 100 feet and visibility S-LOC Cat C and D ¼ SM, and Circling Cat C ¼ SM, Cat D ½ SM. Night landing: Rwy 14, 32 NA. For inop MALSRL, increase S-LOC 2 Cats C and D visibility to 1 ½ and when using Vidalia altimeter setting, increase S-ILS 2 all Cats visibility to 1 mile and S-LOC 2 Cats C and D visibility to 1 ½ mile.

MALSRL 
MISSED APPROACH: Climb to 1000 then climbing right turn to 2000 direct DBN VORTAC and hold.

| | | |
|--------------------------|---|---------------------------------|
| AWOS-3 118.425 | ATLANTA APP CON * 124.2 279.6 | UNICOM 122.7 (CTAF) 0 |
|--------------------------|---|---------------------------------|

ADF REQUIRED



| CATEGORY | A | B | C | D |
|-------------------|----------------------|----------------------|-----------------------|-------------------------|
| S-ILS 2 | 499-½ 200 (200-½) | | | |
| S-LOC 2 | 680-½ 381 (400-½) | 680-¾ 381 (400-¾) | | |
| C CIRCLING | 760-1 449 (500-1) | 780-1 469 (500-1) | 1020-2 709 (800-2) | 1040-2¼ 729 (800-2¼) |

SE-4, 25 FEB 2021 to 25 MAR 2021

SE-4, 25 FEB 2021 to 25 MAR 2021

| | |
|----------|--------------------------|
| ELEV 311 | D TDZE 299 |
| Knots | 60 90 120 150 180 |
| Min:Sec | 4:36 3:04 2:18 1:50 1:32 |