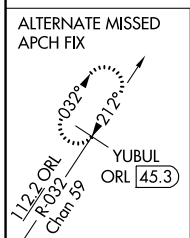
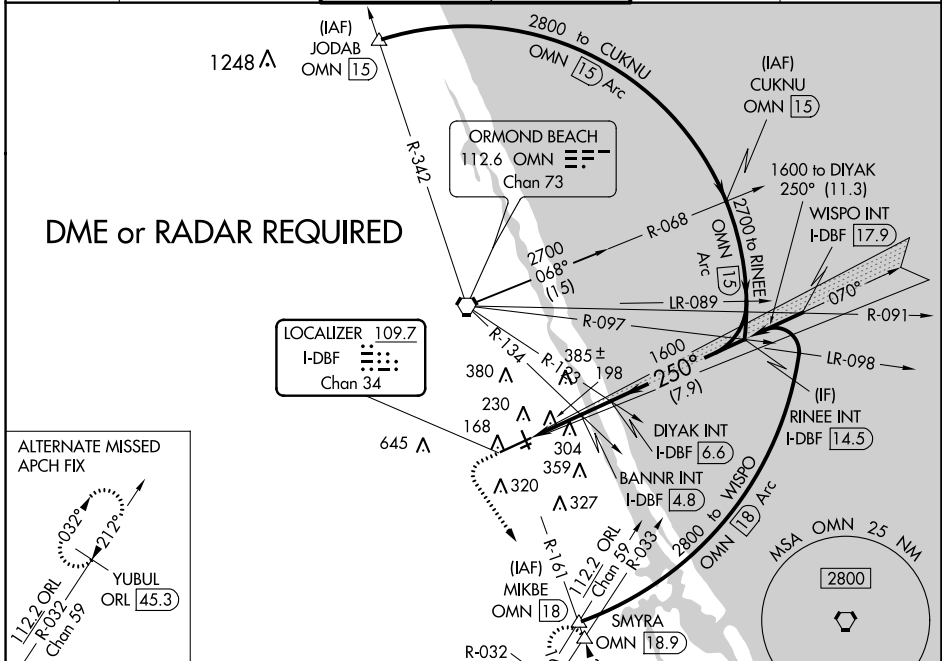


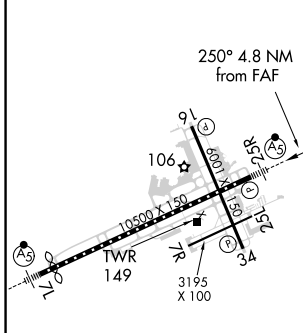
LOC/DME I-DBF 109.7 Chan 34	APP CRS 250°	Rwy Idg TDZE 34	10293 Apt Elev 34
--	------------------------	---------------------------	---------------------------------------

ILS or LOC RWY 25R
DAYTONA BEACH INTL (DAB)

▲	MALSR AS	MISSED APPROACH: Climb to 500 then climbing left turn to 3000 on heading 150° and OMN VORTAC R-161 to SMYRA INT/OMN 18.9 DME and hold, continue climb-in-hold to 3000.	
ATIS 132.875	DAYTONA APP CON 125.8 269.075	DAYTONA TOWER 118.1 257.8 (Rwy 7R-25L) 120.7 257.8 (Rwys 7L-25R, 16-34)	GND CON 121.9 348.6
			CLNC DEL 119.3



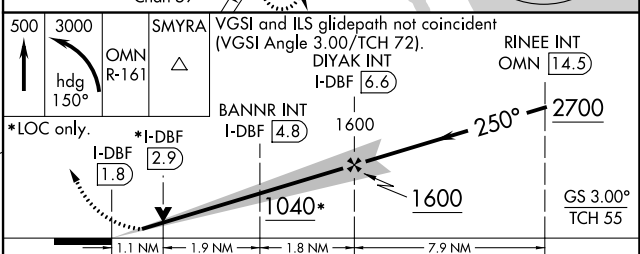
ELEV 34	D	TDZE 34
---------	----------	---------



TDZ/CL Rwy 7L
HIRL Rwy 7L-25R
MIRL Rwys 7R-25L and 16-34
REIL Rwys 7R, 16, 25L and 34

FAF to MAP 4.8 NM

Knots	60	90	120	150	180
Min:Sec	4:48	3:12	2:24	1:55	1:36



CATEGORY	A	B	C	D
S-ILS 25R	234-½		200 (200-½)	
S-LOC 25R	1040-¾ 1006 (1100-¾)	1040-1 1006 (1100-1)	1040-2½	1006 (1100-2½)
C CIRCLING	1040-1¼ 1006 (1100-1¼)	1040-1½ 1006 (1100-1½)	1040-3	1006 (1100-3)
BANNR FIX MINIMUMS (DUAL VOR RECEIVERS or DME REQUIRED)				
S-LOC 25R	440-½	406 (500-½)	440-¾	406 (500-¾)
C CIRCLING	540-1	506 (600-1)	680-1¼ 646 (700-1¼)	700-2 666 (600-2)

SE-3, 25 FEB 2021 to 25 MAR 2021

SE-3, 25 FEB 2021 to 25 MAR 2021