

ILS or LOC RWY 32

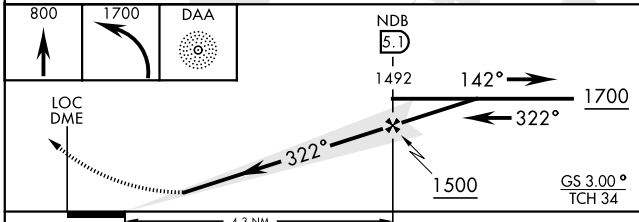
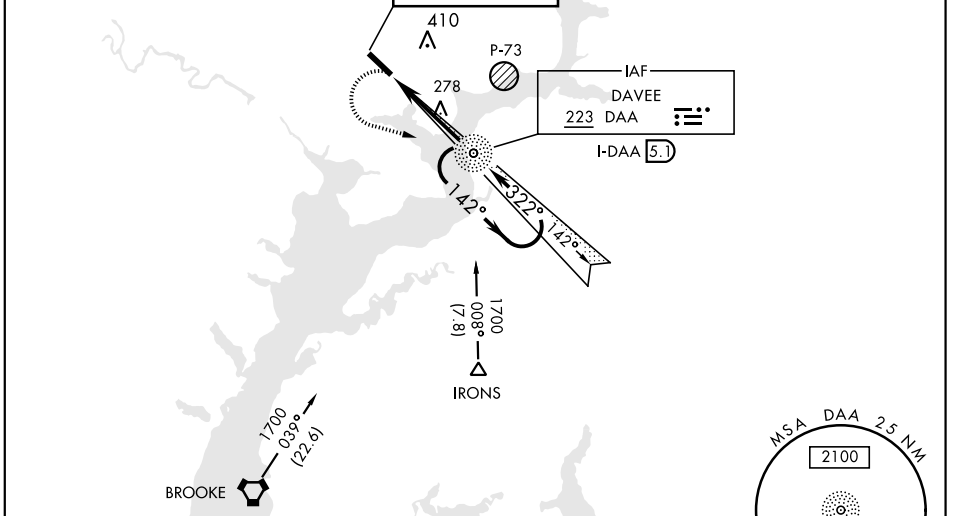
| | | | | |
|---|-------------------------|---|---------------|--------------------|
| LOC/DME I-DAA 108.9 Chan 26 | APCH CRS 322° | Rwy Ildg TDZE 4519 68 Arprt Elev 74 | AL-5504 [USA] | DAVISON AAF (KDAV) |
|---|-------------------------|---|---------------|--------------------|

| | | |
|---|---------------|---|
| ADF required. | MALSF (A4) | MISSED APPROACH: Climb to 800, then climbing left turn to 1700 direct DAA NDB and hold; or when directed by ATC, climb to 800, then climbing left turn to 2000 hdg 190° within 10 NM, expect RADAR vectors. |
| <p>▼ * When ALS inop, increase CAT D vis to 1½ miles.</p> <p>** When ALS inop, increase CAT C vis to 1½ miles, CAT D vis to 1¾ miles.</p> | | |

| | | | | | |
|------------------------|--|---|-------------------------------|--------------------------|-----|
| ATIS 128.175 | POTOMAC APP CON 118.95 319.1 | DAVISON TOWER ★ 126.3 (CTAF) 0229.4 | GND CON 121.9 351.8 | CLNC DEL 351.8 | PAR |
|------------------------|--|---|-------------------------------|--------------------------|-----|

Visibility reduction by helicopters NA.
Inoperative table does not apply to S-32 CAT A and B.

† If local altimeter setting not received, use Ronald Reagan Washington National altimeter setting.



| CATEGORY | A | B | C | D |
|--|--------|-------------|------------------------|------------------------|
| S-ILS 32 | 348/50 | | 280 | (300-1) |
| S-LOC 32* | 540/50 | 472 | (500-1) | 540/60 472 (500-1¼) |
| CIRCLING | 740-1 | 666 (700-1) | 740-1¾ 666 (700-1¾) | 760-2¼ 686 (700-2¼) |
| † RONALD REAGAN WASHINGTON NATIONAL ALTIMETER SETTING MINIMUMS | | | | |
| S-ILS 32 | 381/50 | | 313 | (400-1) |
| S-LOC 32** | 580/50 | 512 (600-1) | 580/60 512 (600-1¼) | 580-1½ 512 (600-1½) |
| CIRCLING | 780-1 | 706 (800-1) | 780-2 706 (800-2) | 800-2¼ 726 (800-2¼) |

| | |
|--|--------------------------|
| ELEV 74 | TDZE 68 |
| Rwy 14 Ildg 4931' Rwy 32 Ildg 4519' | |
| HIRL Rwy 14-32 | |
| FAF to MAP 4.3 NM | |
| Knots | 60 90 120 150 180 |
| Min:Sec | 4:18 2:52 2:09 1:43 1:26 |

ILS or LOC RWY 32

NE-3, 25 FEB 2021 to 25 MAR 2021

NE-3, 25 FEB 2021 to 25 MAR 2021