

WAAS CH 40033 W08A	APP CRS 084°	Rwy Idg TDZE 170 Apt Elev 176	5004
--	------------------------	---	-------------

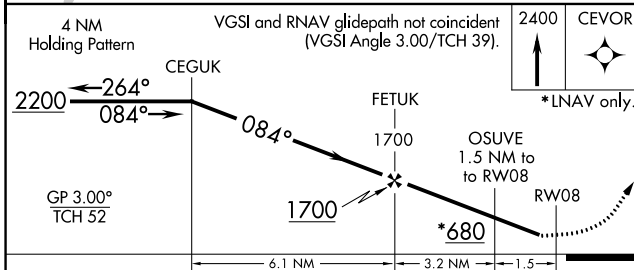
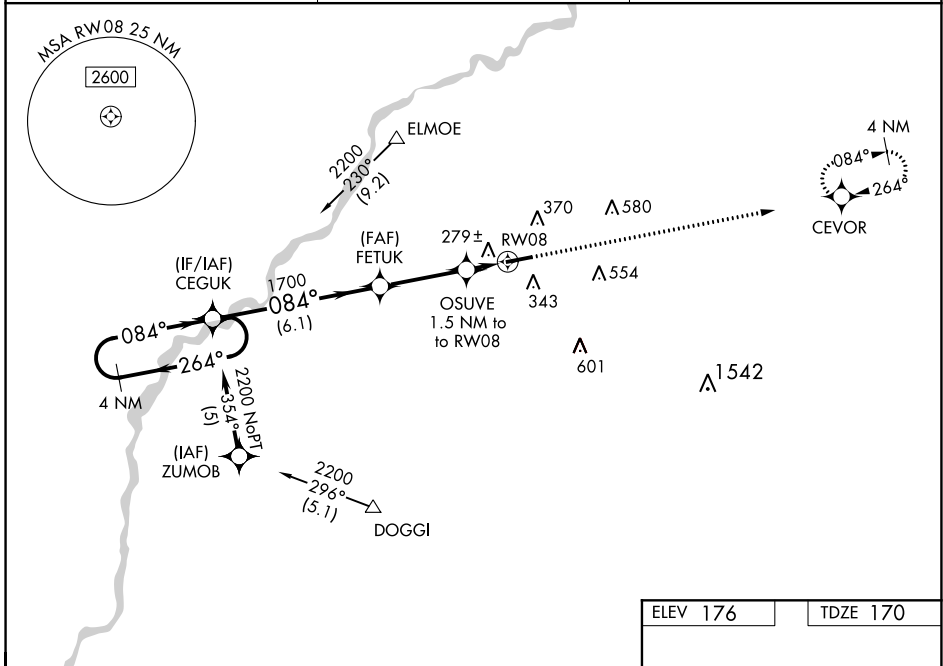
RNAV (GPS) RWY 8

CAMILLA-MITCHELL COUNTY (CXU)

NA Baro-VNAV NA when using Albany altimeter setting. For uncompensated Baro-VNAV systems, LNAV/VNAV NA below -1.5°C (5°F) or above 54°C (130°F). DME/DME RNP-0.3 NA. When local altimeter setting not received, use Albany altimeter setting and increase all DA 48 feet and all MDA 60 feet; increase LPV and LNAV/VNAV visibility 1/8 mile and increase LNAV Cat C and D and Circling Cat C visibility 1/4 mile. Helicopter visibility reduction below 1 SM NA. Rwy 8 Straight-in and Circling minimums NA at night.

MISSED APPROACH:
Climb to 2400 direct CEVOR and hold.

AWOS-3T 118.675	JACKSONVILLE CENTER 125.75 226.8	UNICOM 122.8 (CTAF) 0
---------------------------	--	---------------------------------



ELEV 176	TDZE 170
----------	----------

REIL Rwy 8 and 26 0
MIRL Rwy 8-26 0

CATEGORY	A	B	C	D
LPV DA		465-1	295 (300-1)	
LNAV/VNAV DA		575-1 3/8	405 (400-1 3/8)	
LNAV MDA		540-1	370 (400-1)	
CIRCLING	720-1	544 (600-1)	720-1 1/2 544 (600-1 1/2)	760-2 584 (600-2)

SE-4, 25 FEB 2021 to 25 MAR 2021

SE-4, 25 FEB 2021 to 25 MAR 2021