

# WYLSN SEVEN DEPARTURE (RNAV)

HOUSTON, TEXAS

**TOP ALTITUDE:  
ASSIGNED BY ATC**

ATIS  
 118.325  
 CLINC DEL  
 120.45  
 119.55 (when tower closed)  
 GND CON  
 120.45  
 \* CONROE TOWER  
 124.125 (CTAF)  
 HOUSTON DEP CON  
 119.7 281.4

NOTE: RADAR required.  
 NOTE: DME/DME/IRU or GPS required.  
 NOTE: RNAV 1.

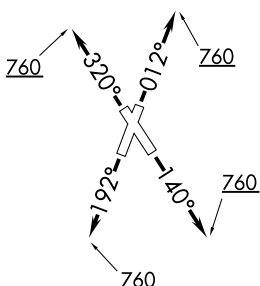
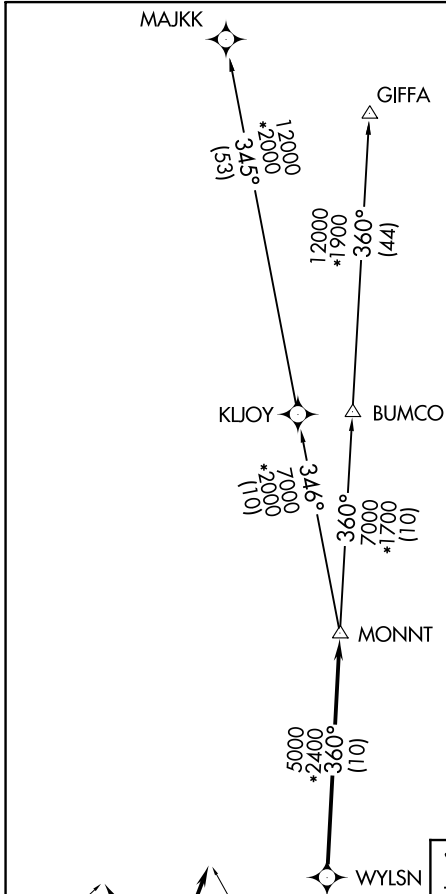
TAKEOFF MINIMUMS

Rwys 1, 14, 19, 32: Standard with minimum climb of 500' per NM to 760.

**▼ DEPARTURE ROUTE DESCRIPTION**

TAKEOFF RWY 1: Climb on heading 012° to 760 for RADAR vectors to WYLSN, thence. . . .  
TAKEOFF RWY 14: Climb on heading 140° to 760 for RADAR vectors to WYLSN, thence. . . .  
TAKEOFF RWY 19: Climb on heading 192° to 760 for RADAR vectors to WYLSN, thence. . . .  
TAKEOFF RWY 32: Climb on heading 320° to 760 for RADAR vectors to WYLSN, thence. . . .  
 . . . .on track 360° to MONNT, then on (transition).  
 Maintain ATC assigned altitude. Expect filed altitude 10 minutes after departure.

GIFFA TRANSITION (WYLSN7.GIFFA)  
MAJKK TRANSITION (WYLSN7.MAJKK)



NOTE: Chart not to scale.

# WYLSN SEVEN DEPARTURE (RNAV)

SC-5, 25 FEB 2021 to 25 MAR 2021

SC-5, 25 FEB 2021 to 25 MAR 2021