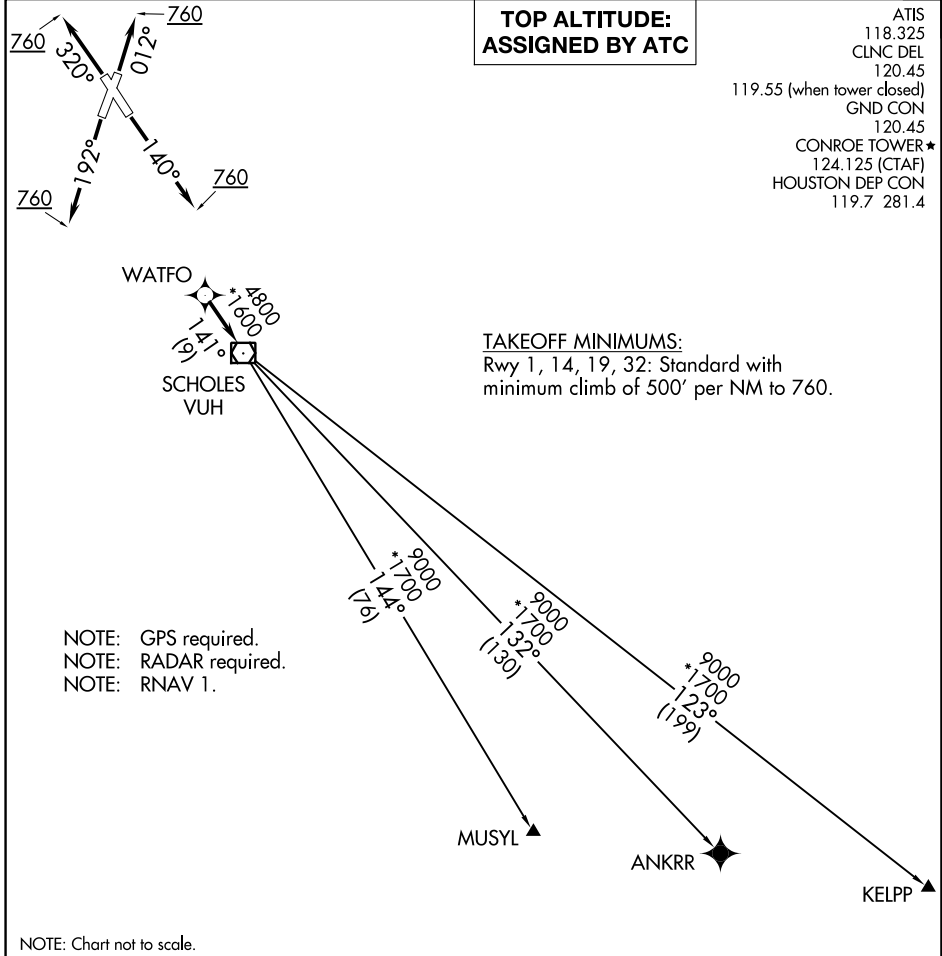


WATFO FIVE DEPARTURE (RNAV)

**TOP ALTITUDE:
ASSIGNED BY ATC**

ATIS 118.325
 CLNC DEL 120.45
 119.55 (when tower closed)
 GND CON 120.45
 CONROE TOWER* 120.45
 124.125 (CTAF)
 HOUSTON DEP CON 119.7 281.4



SC-5, 25 FEB 2021 to 25 MAR 2021

SC-5, 25 FEB 2021 to 25 MAR 2021

DEPARTURE ROUTE DESCRIPTION

TAKEOFF RWY 1: Climb on heading 012° to 760, for RADAR vectors to WATFO, thence. . . .
TAKEOFF RWY 14: Climb on heading 140° to 760, for RADAR vectors to WATFO, thence. . . .
TAKEOFF RWY 19: Climb on heading 192° to 760, for RADAR vectors to WATFO, thence. . . .
TAKEOFF RWY 32: Climb on heading 320° to 760, for RADAR vectors to WATFO, thence. . . .
 . . . on track 141° to VUH VOR/DME, then on (transition). Maintain ATC assigned altitude.
 Expect filed altitude 10 minutes after departure.

ANKRR TRANSITION (WATFO5.ANKRR)
KELPP TRANSITION (WATFO5.KELPP)
MUSYL TRANSITION (WATFO5.MUSYL)