

(STYCK7.STYCK) 19115

AL-5573 (FAA)

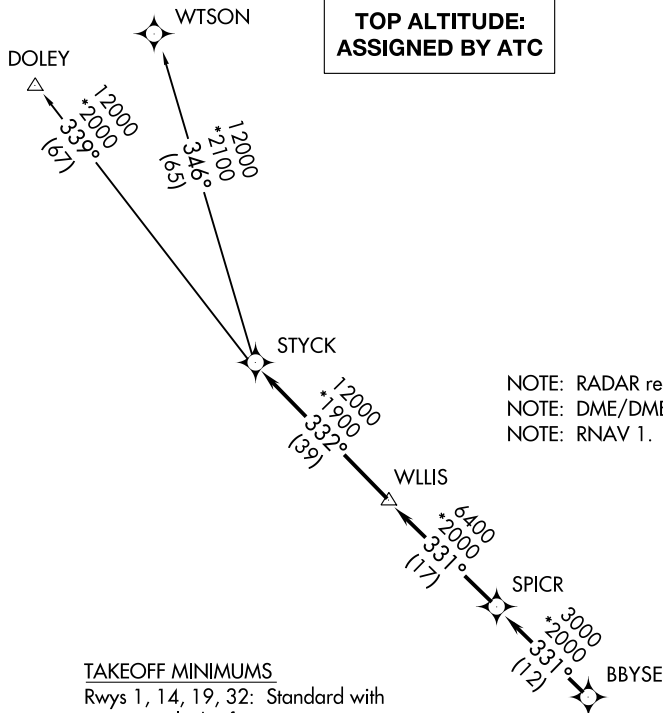
CONROE-NORTH HOUSTON RGNL (C̄XO)

# STYCK SEVEN DEPARTURE (RNAV)

HOUSTON, TEXAS

**TOP ALTITUDE:  
ASSIGNED BY ATC**

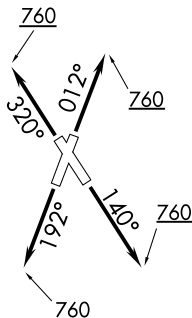
ATIS  
 118.325  
 CLINC DEL  
 120.45  
 119.55 (when tower closed)  
 GND CON 120.45  
 CONROE TOWER ★  
 124.125 (CTAF)  
 HOUSTON DEP CON  
 119.7 281.4



NOTE: RADAR required.  
 NOTE: DME/DME/IRU or GPS required.  
 NOTE: RNAV 1.

### TAKEOFF MINIMUMS

Rwys 1, 14, 19, 32: Standard with minimum climb of 500' per NM to 760.



NOTE: Chart not to scale.



### DEPARTURE ROUTE DESCRIPTION

TAKEOFF RWY 1: Climb heading 012° to 760 for RADAR vectors to BBYSE, thence. . .

TAKEOFF RWY 14: Climb heading 140° to 760 for RADAR vectors to BBYSE, thence. . .

TAKEOFF RWY 19: Climb heading 192° to 760 for RADAR vectors to BBYSE, thence. . .

TAKEOFF RWY 32: Climb heading 320° to 760 for RADAR vectors to BBYSE, thence. . .

. . . on track 331° to SPICR, then on track 331° to WLLIS, then on track 332° to STYCK, then on (transition). Maintain ATC assigned altitude. Expect filed altitude 10 minutes after departure.

DOLEY TRANSITION (STYCK7.DOLEY)

WTSON TRANSITION (STYCK7.WTSON)

# STYCK SEVEN DEPARTURE (RNAV)

(STYCK7.STYCK) 25APR19

HOUSTON, TEXAS

CONROE-NORTH HOUSTON RGNL (C̄XO)

SC-5, 25 FEB 2021 to 25 MAR 2021

SC-5, 25 FEB 2021 to 25 MAR 2021