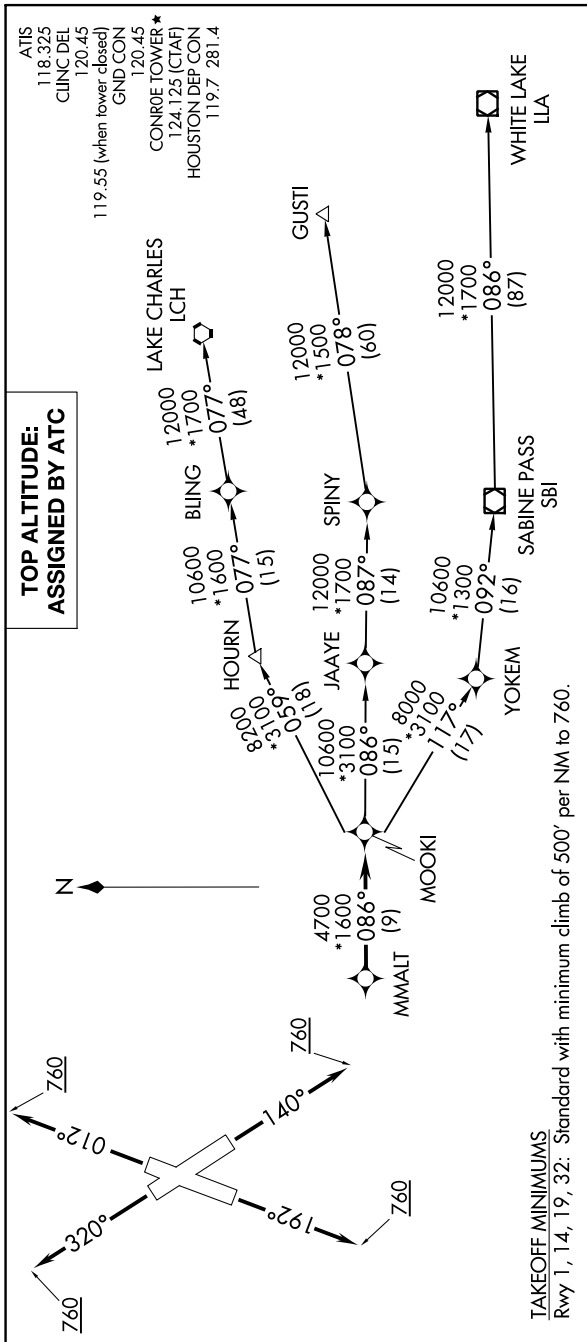


MMALT FIVE DEPARTURE (RNAV)

SC-5, 25 FEB 2021 to 25 MAR 2021



**TOP ALTITUDE:
ASSIGNED BY ATC**

DEPARTURE ROUTE DESCRIPTION

- TAKEOFF RWY 1: Climb on heading 012° to 760 for RADAR vectors to MMALT, thence. . . .
- TAKEOFF RWY 14: Climb on heading 140° to 760 for RADAR vectors to MMALT, thence. . . .
- TAKEOFF RWY 19: Climb on heading 192° to 760 for RADAR vectors to MMALT, thence. . . .
- TAKEOFF RWY 32: Climb on heading 320° to 760 for RADAR vectors to MMALT, thence. . . .

. . . on track 086° to MOOKI, then on (transition). Maintain ATC assigned altitude.
 Expect filed altitude 10 minutes after departure.

- GUSTI TRANSITION (MMALT5.GUSTI)
- LAKE CHARLES TRANSITION (MMALT5.LCH)
- WHITE LAKE TRANSITION (MMALT5.LLA)

- NOTE: DME/DME/IRU or GPS required.
- NOTE: RADAR required.
- NOTE: RNAV 1.
- NOTE: GUSTI and LCH TRANSITIONS ATC assigned only for aircraft departing AXH, EFD, GLS, HPY, IWS, LBX, LVJ, SGR, TME, T00, T41 and 54T.

NOTE: Chart not to scale.

SC-5, 25 FEB 2021 to 25 MAR 2021