

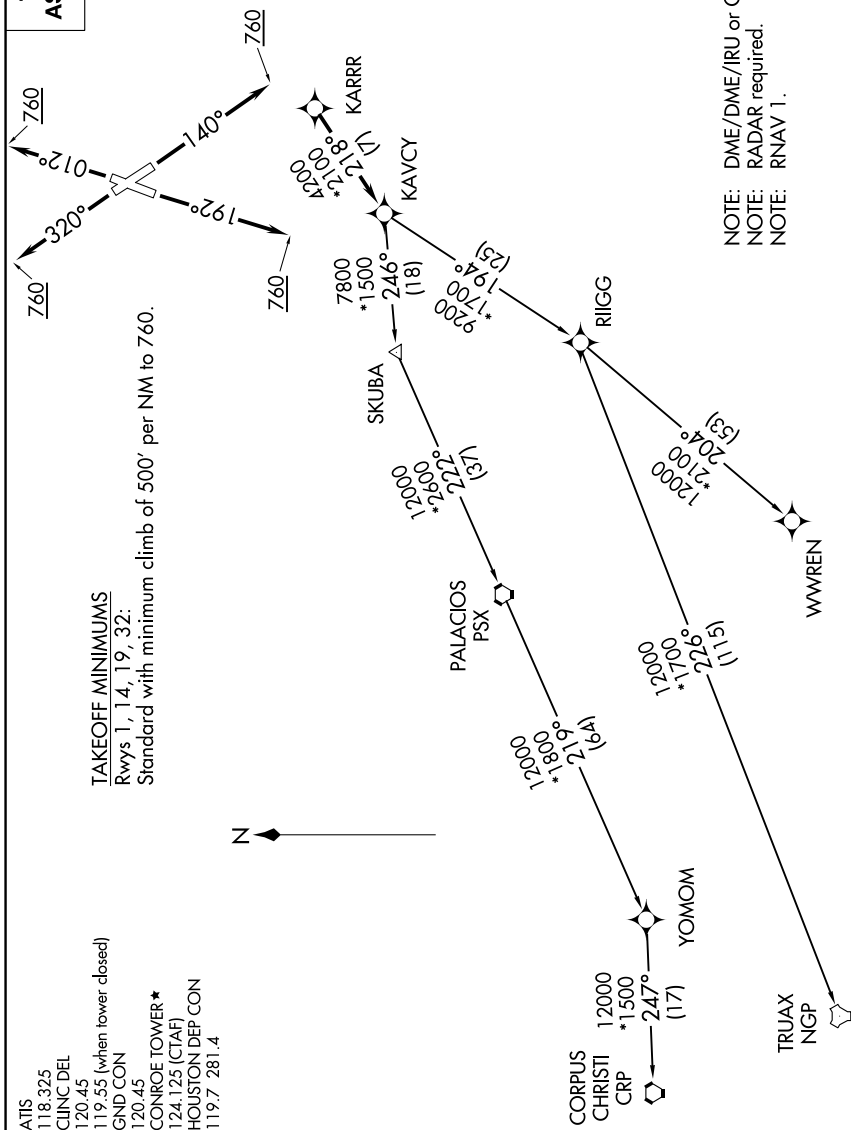
# KARR SIX DEPARTURE (RNAV)

TOP ALTITUDE:  
ASSIGNED BY ATC

### TAKEOFF MINIMUMS

Rwys 1, 14, 19, 32:  
Standard with minimum climb of 500' per NM to 760.

- ATIS 118.325
- CLINIC DEL 120.45
- 119.55 (when tower closed)
- GND CON 120.45
- CONROE TOWER \* 124.125 (CTAF)
- HOUSTON DEP CON 119.7 281.4



(NARRATIVE ON FOLLOWING PAGE)

NOTE: Chart not to scale.

NOTE: DME/DME/IRU or GPS required.  
NOTE: RADAR required.  
NOTE: RNAV 1.