

(JCT1..JCT) 18032

AL-5573 (FAA)

CONROE-NORTH HOUSTON RGNL (CXXO)  
HOUSTON, TEXAS

# JUNCTION ONE DEPARTURE

**TOP ALTITUDE:  
ASSIGNED BY ATC**

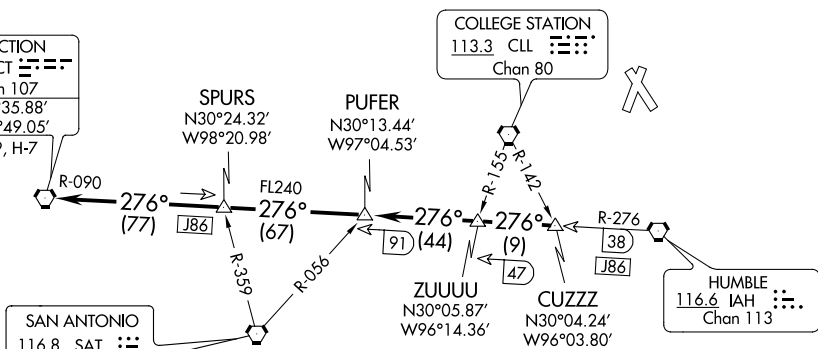
ATIS  
118.325  
CLNC DEL  
120.45 119.55 (when tower closed)  
GND CON  
120.45  
CONROE TOWER \*  
124.125  
HOUSTON DEP CON  
119.7 281.4

JUNCTION  
116.0 JCT  
Chan 107  
N30°35.88'  
W99°49.05'  
L-19, H-7

COLLEGE STATION  
113.3 CLL  
Chan 80

SAN ANTONIO  
116.8 SAT  
Chan 115

HUMBLE  
116.6 IAH  
Chan 113



NOTE: RADAR required.  
NOTE: For aircraft overflying JCT VORTAC  
on J86 filing FL240 or above.

TAKEOFF MINIMUMS  
Rwys 1, 14, 19, 32: Standard.

NOTE: Chart not to scale.



## DEPARTURE ROUTE DESCRIPTION

TAKEOFF ALL RUNWAYS: When entering controlled airspace, climb on assigned heading for RADAR vectors to CUZZZ INT. Maintain ATC assigned altitude. Expect filed altitude 10 minutes after departure, thence . . . .

. . . . on IAH R-276 and JCT R-090 to JCT VORTAC.

# JUNCTION ONE DEPARTURE

(JCT1..JCT) 22JUN17

HOUSTON, TEXAS  
CONROE-NORTH HOUSTON RGNL (CXXO)

SC-5, 25 FEB 2021 to 25 MAR 2021

SC-5, 25 FEB 2021 to 25 MAR 2021