

(CRIED9.CRIED) 18032

CRIED NINE DEPARTURE

AL-5573 (FAA)

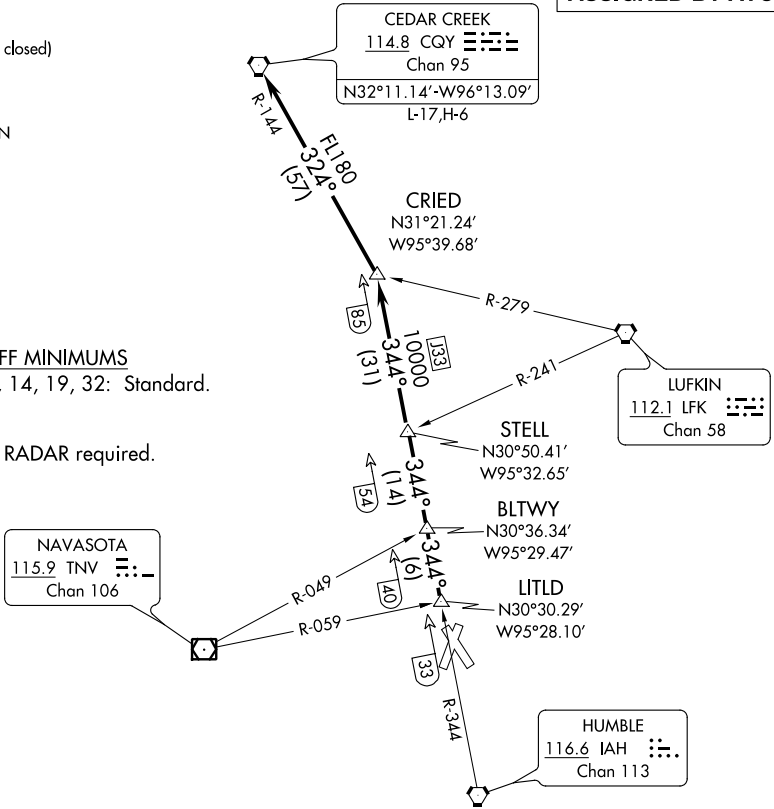
CONROE-NORTH HOUSTON RGNL (C̄X̄O)
HOUSTON, TEXAS

ATIS
118.325
CLNC DEL
120.45
119.55 (when tower closed)
GND CON 120.45
CONROE TOWER *
124.125 (CTAF)
HOUSTON DEP CON
119.7 281.4

**TOP ALTITUDE:
ASSIGNED BY ATC**

TAKEOFF MINIMUMS
Rwys 1, 14, 19, 32: Standard.

NOTE: RADAR required.



SC-5, 25 FEB 2021 to 25 MAR 2021

SC-5, 25 FEB 2021 to 25 MAR 2021

NOTE: Chart not to scale.

DEPARTURE ROUTE DESCRIPTION

TAKEOFF ALL RUNWAYS: When entering controlled airspace, climb on assigned heading for RADAR vectors to LITLD INT. Maintain ATC assigned altitude. Expect filed altitude 10 minutes after departure, thence

. . . . on IAH R-344 to STELL INT, then on IAH R-344 to CRIED INT then left turn on CQY R-144 to CQY VORTAC.

CRIED NINE DEPARTURE
(CRIED9.CRIED) 22JUN17

HOUSTON, TEXAS
CONROE-NORTH HOUSTON RGNL (C̄X̄O)