

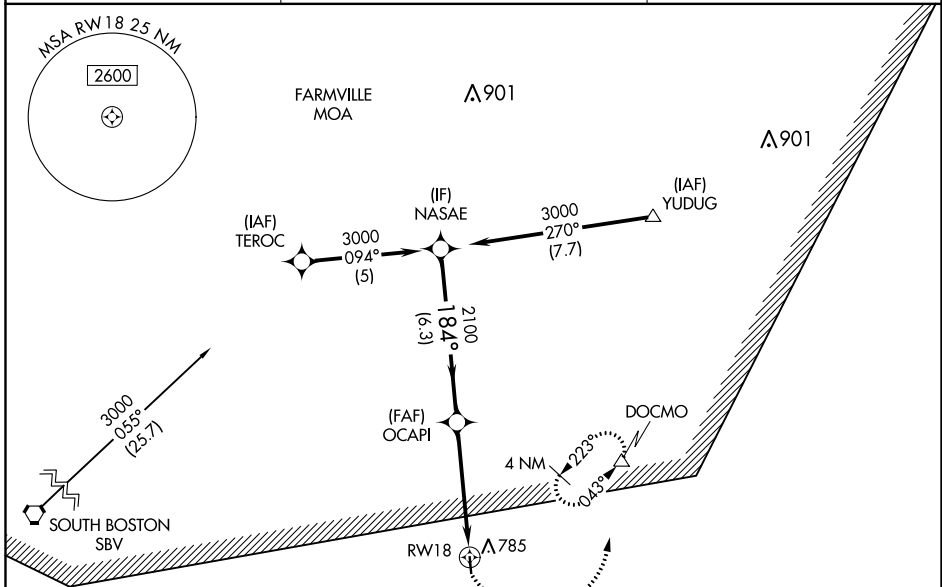
APP CRS	Rwy Idg	3400
184°	TDZE	503
	Apt Elev	503

RNAV (GPS) RWY 18

CHASE CITY MUNI (CXE)

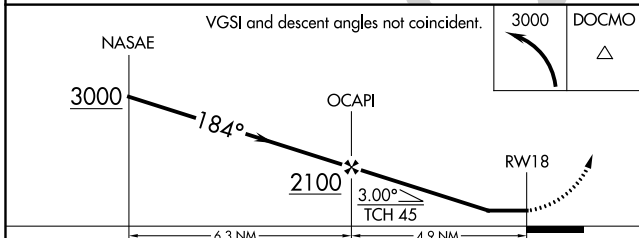
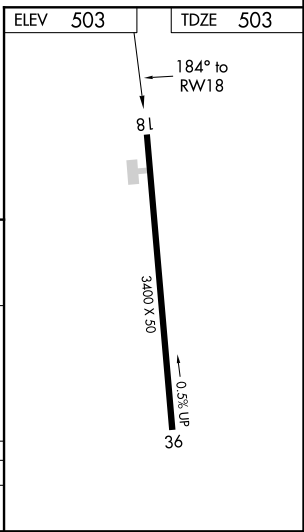
RNP APCH.	Use South Hill altimeter setting, when not received use Danville altimeter setting and increase all MDA 60 feet. Procedure NA at night. Rwy 18 helicopter visibility reduction below 1 SM NA.	MISSED APPROACH: Climbing left turn to 3000 direct DOCMO and hold, continue climb-in-hold to 3000.
▼ NA		

AWOS-3 121.225	WASHINGTON CENTER 118.75 353.9	UNICOM 122.9 (CTAF)
--------------------------	--	-------------------------------



NE-3, 25 FEB 2021 to 25 MAR 2021

NE-3, 25 FEB 2021 to 25 MAR 2021



CATEGORY	A	B	C	D
LNAV MDA	1520-3	1017 (1100-3)	NA	