

CLOVIS, NEW MEXICO

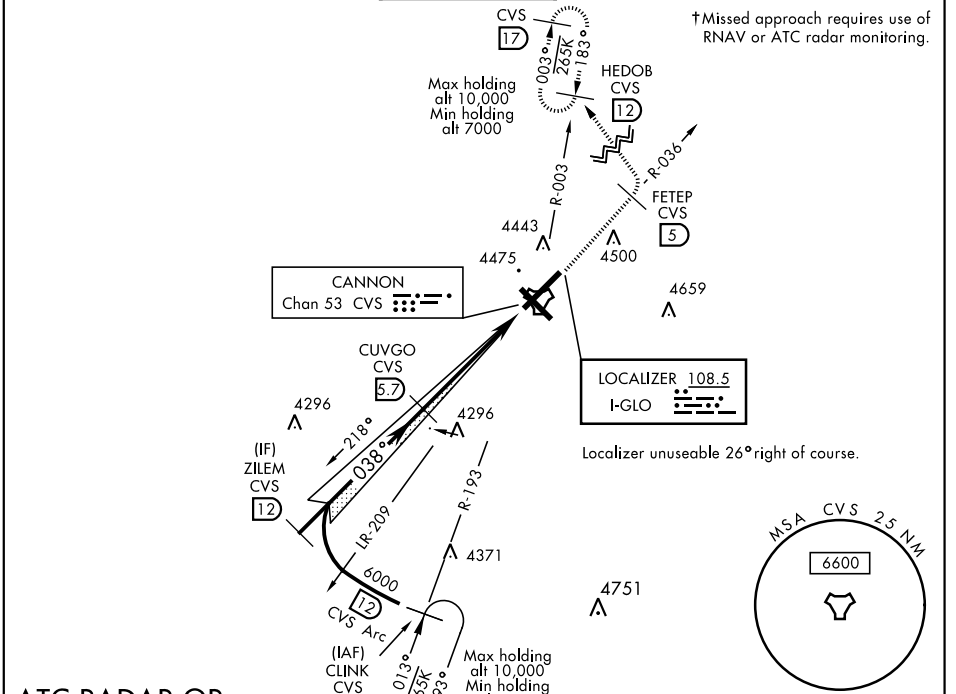
ILS or LOC RWY 4

LOC I-GLO 108.5	APCH CRS 038°	Rwy Ldg 10,003 TDZE 4284 Arprt Elev 4295	AL-512 [USAF]	CANNON AFB (KCVS)
---------------------------	-------------------------	---	---------------	-------------------

**When ALS inop, increase all CAT RVR to 40 and vis to 3/4 miles.
 **When ALS inop, increase CAT AB RVR to 55 and vis to 1 mile, CAT CDE RVR to 60 and vis to 1 1/2 miles.

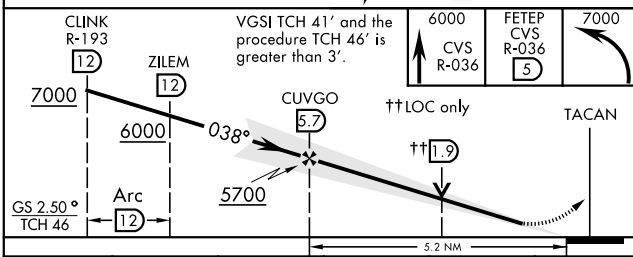
† MISSED APPROACH: Climb to 6000 out CVS TACAN R-036 to 5 DME (FETEP) turning left climb to 7000 intcp CVS R-003 to 12 DME (HEDOB) and hold.

ATIS 119.1 269.9	CANNON APP CON 118.425 352.1	CANNON TOWER 120.4 270.25	GND CON 121.9 275.8	CLNC DEL 120.2 293.225
----------------------------	--	-------------------------------------	-------------------------------	----------------------------------



ATC RADAR OR DME REQUIRED

EMERG SAFE ALT 100 NM 9000



ELEV 4295	TDZE 4284
REIL all Rwy HIRL all Rwy	
FAF to MAP 5.2 NM	
Knots	60 90 120 150 180
Min:Sec	5:12 3:28 2:36 2:05 1:44

CLOVIS, NEW MEXICO 34°23'N-103°19'W CANNON AFB (KCVS)
 Amdt 4 11OCT18

ILS or LOC RWY 4

SW-1, 25 FEB 2021 to 25 MAR 2021

SW-1, 25 FEB 2021 to 25 MAR 2021