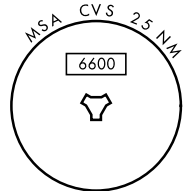
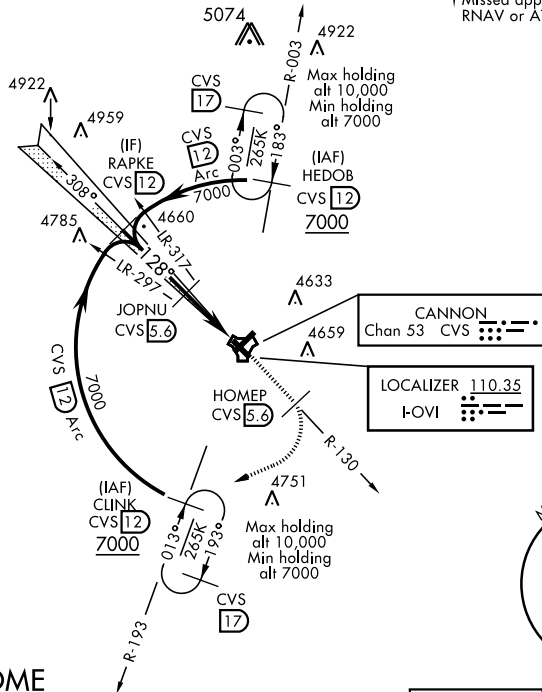


ILS or LOC RWY 13

LOC I-OVI 110.35	APCH CRS 128°	Rwy ldg 8196 TDZE 4294 Arprt Elev 4295	AL-512 [USAF]	CANNON AFB (KCVS)
* When ALS inop, increase vis to ¾ mile. ** When ALS inop, increase CAT AB vis to 1 mile; CAT CDE vis to 1½ miles.			SSALR (A3)	† MISSED APPROACH: Climb to 6000 out CVS TACAN R-130 5.6 DME (HOMEP) then climbing right turn to 7000 intercept CVS R-193 to 12 DME (CLINK) and hold.
ATIS 119.1 269.9	CANNON APP CON 118.425 352.1	CANNON TOWER 120.4 270.25	GND CON 121.9 275.8	CLNC DEL 120.2 293.225

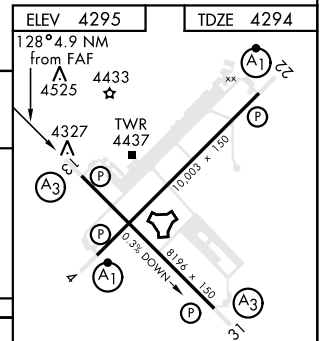
† Missed approach requires use of RNAV or ATC radar monitoring.



ATC RADAR or DME REQUIRED

EMERG SAFE ALT 100 NM 8000

VGSI and ILS glidepath not coincident (VGSI Angle 3.00/TCH 37). RAPKE (12) GS 3.00° TCH 45 7000 128° 5900 JOPNU (5.6) 4.9 NM TACAN HOMEP (5.6) CLINK (12)	6000 CVS R-130	HOMEP CVS R-130 (5.6)	7000	CLINK CVS R-193 (12)	
	†† LOC only †† (2)				
CATEGORY	A	B	C	D	E
S-ILS 13 *	4544-½		250	(300-½)	
S-LOC 13**	4760-½	466 (500-½)	4760-1	466	(500-1)
Ⓞ CIRCLING	4840-1	4860-1½	5000-2¼	5020-2½	
	545 (600-1)	565(600-1½)	705(800-2¼)	725(800-2½)	



REIL all Rwy HIRL all Rwy					
FAF to MAP 4.9 NM					
Knots	60	90	120	150	180
Min:Sec	4:54	3:16	2:27	1:58	1:38

ILS or LOC RWY 13

SW-1, 25 FEB 2021 to 25 MAR 2021

SW-1, 25 FEB 2021 to 25 MAR 2021