


# RNAV (GPS) RWY 6

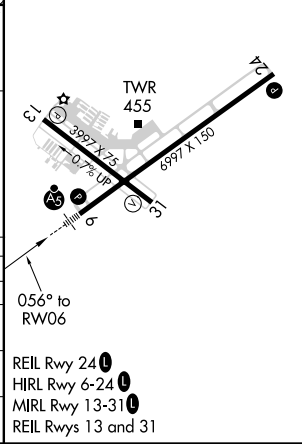
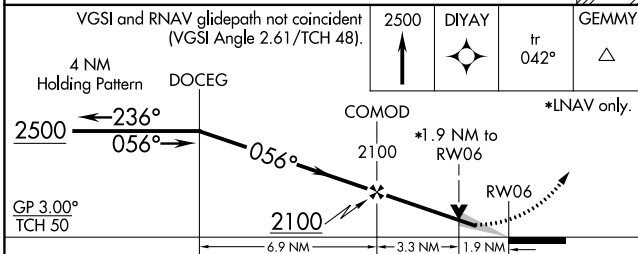
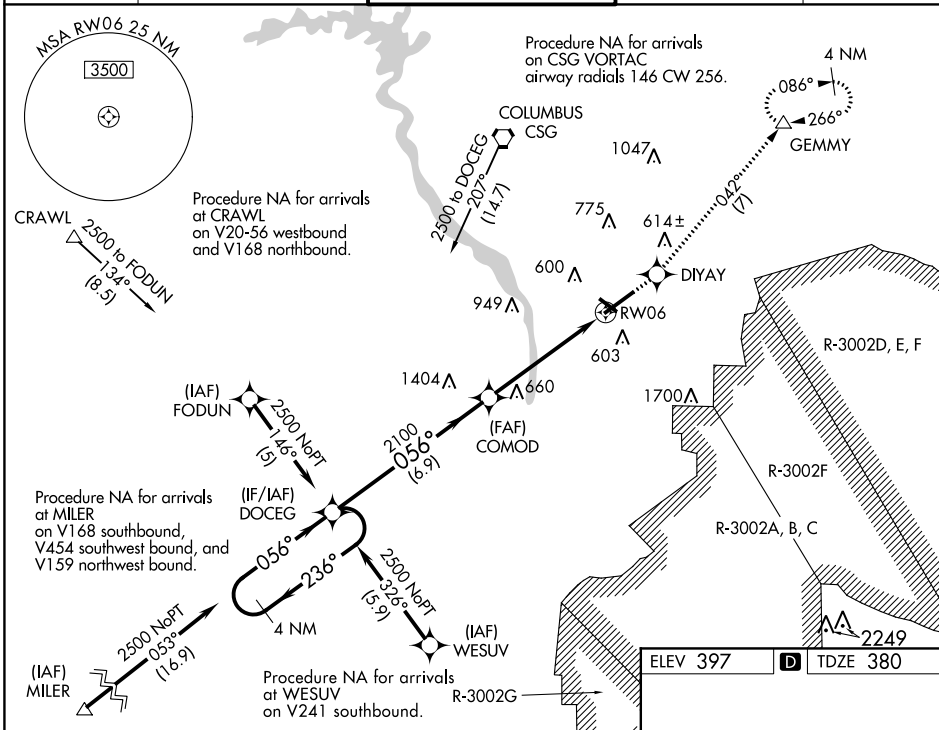
COLUMBUS (CSG)

WAAS CH <b>40001</b> W06A	APP CRS <b>056°</b>	Rwy Idg <b>6997</b> TDZE <b>380</b> Apt Elev <b>397</b>
---------------------------------	------------------------	---

▼ For uncompensated Baro-VNAV systems, LNAV/VNAV NA below -6°C (-22°F) or above 54°C (130°F).  
 Circling Rwy 31 NA at night. DME/DME RNP-0.3 NA.  
 For inop ALS, increase LPV all Cats visibility to RVR 5000.

MALSRS  MISSED APPROACH: Climb to 2500 direct DIYAY and on track 042° to GEMMY and hold.

ATIS <b>127.75</b>	ATLANTA APP CON* <b>125.5 323.1</b>	COLUMBUS TOWER* <b>120.1 (CTAF) 0 257.8</b>	GND CON <b>121.9 348.6</b>	UNICOM <b>122.95</b>
-----------------------	--	--	-------------------------------	-------------------------



CATEGORY	A	B	C	D
LPV DA		674/24	294 (300-1/2)	
LNAV/VNAV DA		904-1 3/8	524 (600-1 3/8)	
LNAV MDA	960/24	580 (600-1/2)	960-1 1/4	580 (600-1 1/4)
CIRCLING	960-1	563 (600-1)	960-1 3/4	960-2
			563 (600-1 3/4)	563 (600-2)

SE-4, 25 FEB 2021 to 25 MAR 2021

SE-4, 25 FEB 2021 to 25 MAR 2021