

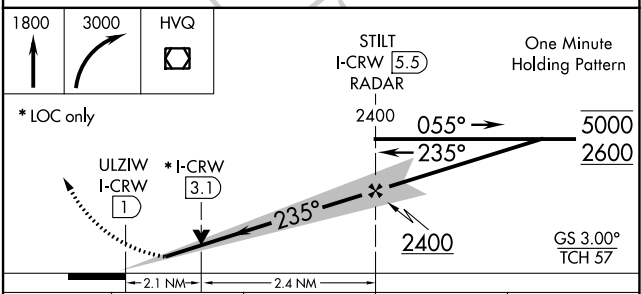
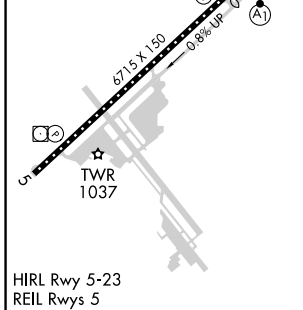
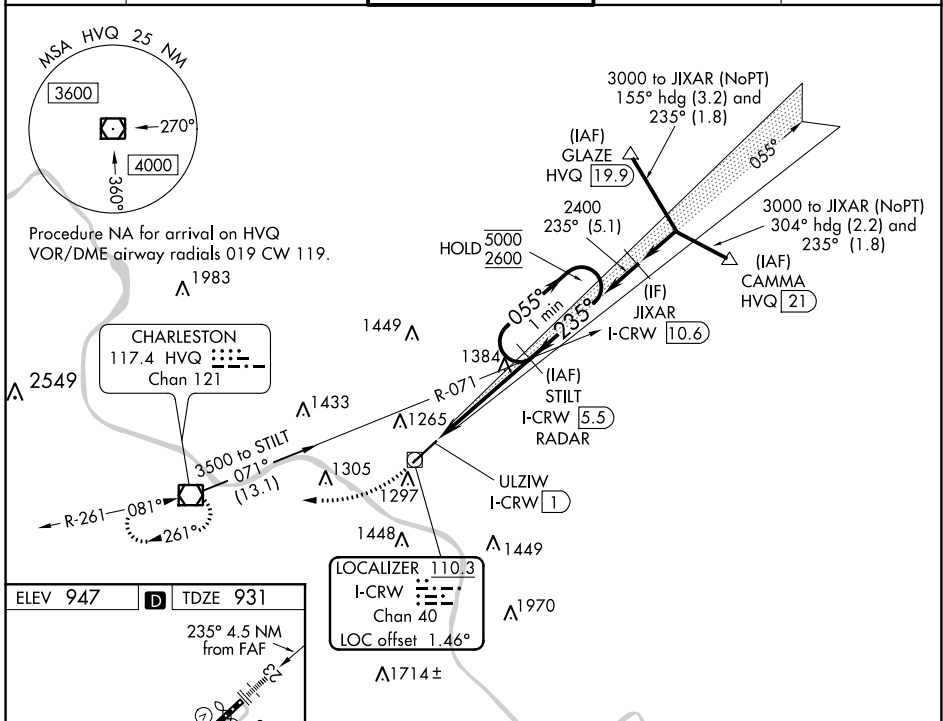
LOC/DME I-CRW <b>110.3</b> Chan <b>40</b>	APP CRS <b>235°</b>	Rwy Idg TDZE <b>931</b> Apt Elev <b>947</b>
---	------------------------	---

# ILS or LOC RWY 23

YEAGER (CRW)

DME or RADAR required.		ALSF-1 	MISSED APPROACH: Climb to 1800 then climbing right turn to 3000 direct HVQ VOR/DME and hold.
Autopilot coupled approach NA below 1700. Rwy 23 helicopter visibility reduction below RVR 4000 NA. Inop table does not apply to S-ILS 23. For inop ALS, increase S-LOC 23 Cat A/B visibility to RVR 5500, and Cat C/D to 2 SM.			

ATIS <b>127.6</b>	CHARLESTON APP CON <b>124.1 269.125</b>	CHARLESTON TOWER <b>125.7 257.8</b>	GND CON <b>121.8 348.6</b>	CLNC DEL <b>118.55</b>
----------------------	--	--	-------------------------------	---------------------------



FAF to MAP 4.5 NM					
Knots	60	90	120	150	180
Min:Sec	4:30	3:00	2:15	1:48	1:30
CATEGORY	A	B	C	D	
S-ILS 23	1181/40 250 (300-¾)				
S-LOC 23	1640/40 709 (700-¾)		1640-1½ 709 (700-1½)		

NE-4, 25 FEB 2021 to 25 MAR 2021

NE-4, 25 FEB 2021 to 25 MAR 2021